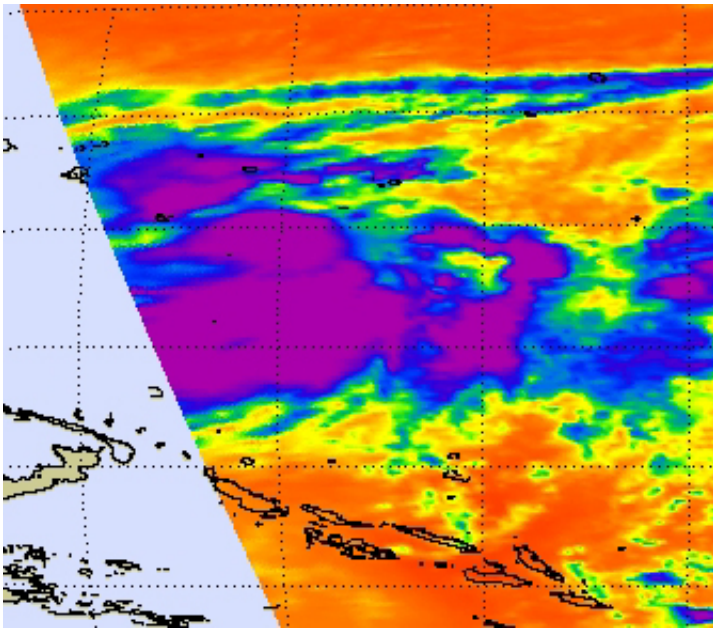


NASA sees Tropical Storm Bopha intensifying in Micronesia

November 27 2012



This infrared image of the eastern side of Tropical Storm Bopha was captured on Nov. 27 at 0241 UTC by the AIRS instrument that flies aboard NASA's Aqua satellite. The purple areas indicate coldest, highest cloud top temperatures that have the potential for dropping heavy rainfall. Credit: NASA JPL/Ed Olsen

Tropical storm warnings are in effect in Micronesia as NASA and other satellite imagery indicates that Tropical Storm Bopha continues to intensify.

The Atmospheric Infrared Sounder (AIRS) instrument that flies aboard

NASA's Aqua satellite captured an infrared image of Tropical Storm Bopha on Nov. 27 at 0241 UTC that indicated a lot of power exists in the strengthening tropical storm. The AIRS image captured the eastern half of the tropical storm and showed a large area of very cold, very high [cloud tops](#), where temperatures colder than -63 Fahrenheit (-52 Celsius) have the potential for dropping heavy rainfall.

On Nov. 27, the [National Weather Service](#) in Tiyan, Guam noted that "Residents of Satawal in Yap State should closely monitor the progress of Tropical Storm Bopha, as a tropical storm watch could be required Wednesday, Nov. 28." A tropical storm warning remained in effect for Nukuoro in Pohnpei State and Lukunor in Chuuk State. A tropical storm watch remains in effect for Losap, the Chuuk Lagoon Islands and Puluwat in Chuuk State.

At 1500 UTC (10 a.m. EST/1 a.m. CHST local time) the center of Tropical Storm Bopha was located near latitude 4.7 degrees north and longitude 155.2 degrees east, only 55 miles north-northeast of Nukuoro. Bopha was also about 105 miles southeast of Lukunor and 225 miles southeast of Losap. Tropical Storm Bopha was nearly stationary but the National Weather Service expects Bopha to start moving westward.

Bopha's [maximum sustained winds](#) have increased to 50 mph and Tropical Storm Bopha is expected to continue intensifying. [Tropical storm force winds](#) extend outward up to 45 miles from the center, making the storm almost 100 miles in diameter.

More information: For specific information on effects to individual islands, visit the National Weather Service website: www.prh.noaa.gov/data/GUM/HLSPQ1

Provided by NASA's Goddard Space Flight Center

Citation: NASA sees Tropical Storm Bopha intensifying in Micronesia (2012, November 27)
retrieved 27 April 2024 from

<https://phys.org/news/2012-11-nasa-tropical-storm-bopha-micronesia.html>

This document is subject to copyright. Apart from any fair dealing for the purpose of private study or research, no part may be reproduced without the written permission. The content is provided for information purposes only.