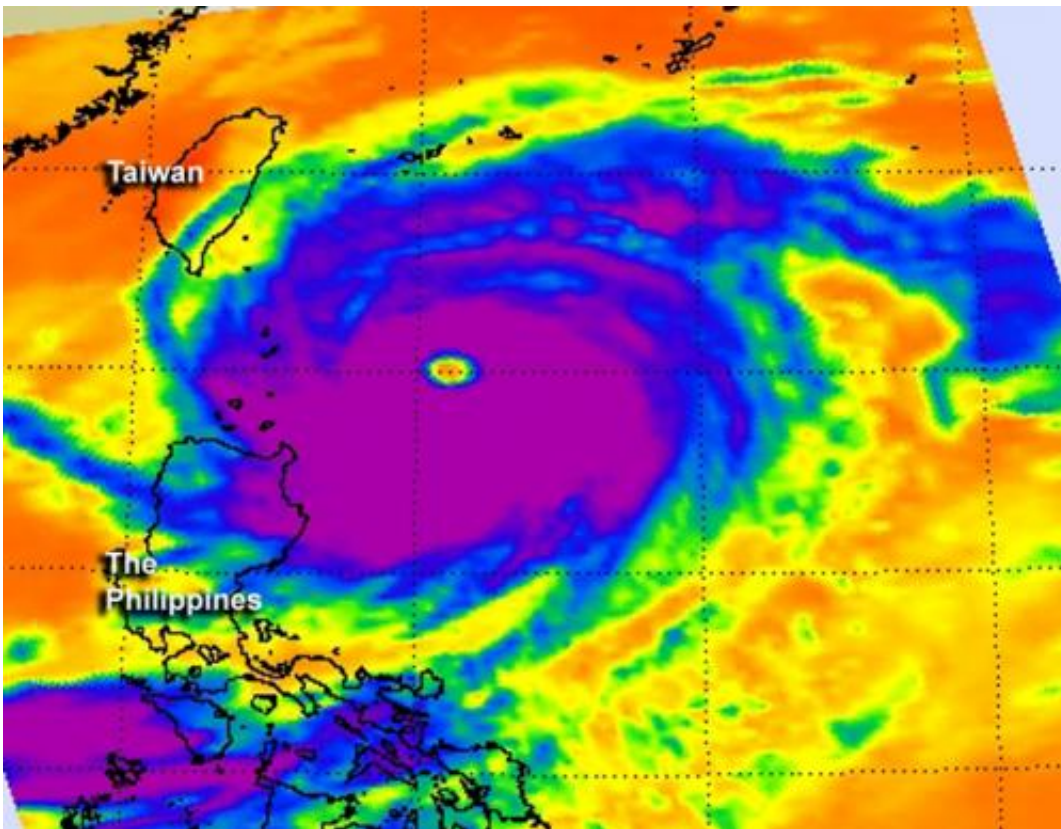


NASA sees a wide-eyed Super Typhoon Jelawat

September 27 2012



This infrared image was created from AIRS data of Super Typhoon Jelawat on Sept. 27 at 0459 UTC as the storm moves away from the northern Philippines. A thick area of strong thunderstorms with very cold cloud top temperatures appear in purple surrounding at 36 nautical-mile wide eye. Credit: Credit: NASA JPL/Ed Olsen

One day ago, Super Typhoon Jelawat's eye was about 25 nautical miles

in diameter, today, Sept. 27, NASA satellite data indicated that eye has grown to 36 nautical miles!

The latest [infrared image](#) from the Atmospheric Infrared Sounder (AIRS) instrument that flies on NASA's Aqua satellite shows a clear eye in Typhoon Jelawat on Sept. 25. The cloud top temperatures of the thunderstorms surrounding the eye exceed -63 Fahrenheit (-52 Celsius) indicating that they are very powerful and heavy rainmakers.. Jelawat also has a rounded shape indicating that circulation is strong and symmetrical

On Sept. 25, [Super Typhoon](#) Jelawat's [maximum sustained winds](#) were near 95 knots (109 mph/176 kmh). It was located about 390 nautical miles (449 miles/722 km) south-southwest of Kadena Air Base, Okinawa, Japan, near 21.4 North and 124.0 East. Jelawat was moving north-northwest at 9 knots(10.3 mph/16.6 kmh) and generating extreme seas with [wave heights](#) to 48 feet (14.6 meters).

Like Ewiniar, Jelawat is also expected to affect Kadena Air Base and its center is forecast to move very close to the island. The Joint [Typhoon Warning Center](#) noted "Regardless of the exact track near Okinawa, Jelawat is a 300 nautical mile wide system with a large eye and eyewall and will maintain 100 plus knot winds (115 mph/185 kmh) through (48 hours from Sept. 27 at 11 a.m. EDT/1500 UTC) due to continued favorable environmental conditions."

Jelawat is then expected to continue north-northeast and make landfall just south of Kyoto, Japan on Sept. 30.

Provided by NASA's Goddard Space Flight Center

Citation: NASA sees a wide-eyed Super Typhoon Jelawat (2012, September 27) retrieved 25

April 2024 from <https://phys.org/news/2012-09-nasa-wide-eyed-super-typhoon-jelawat.html>

This document is subject to copyright. Apart from any fair dealing for the purpose of private study or research, no part may be reproduced without the written permission. The content is provided for information purposes only.