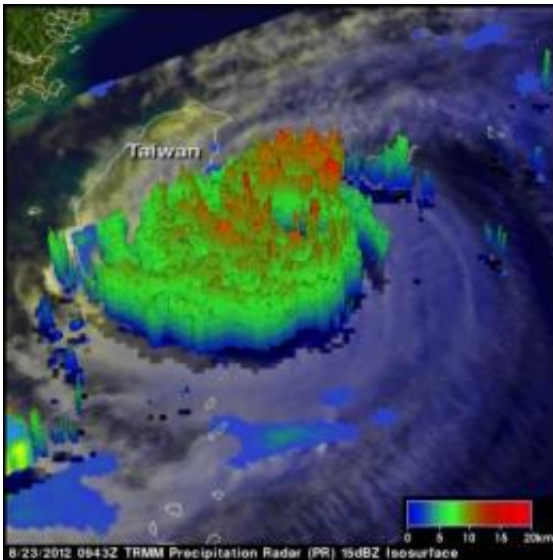


Tropical Storm Tembin crossed over Taiwan, back over water

August 24 2012

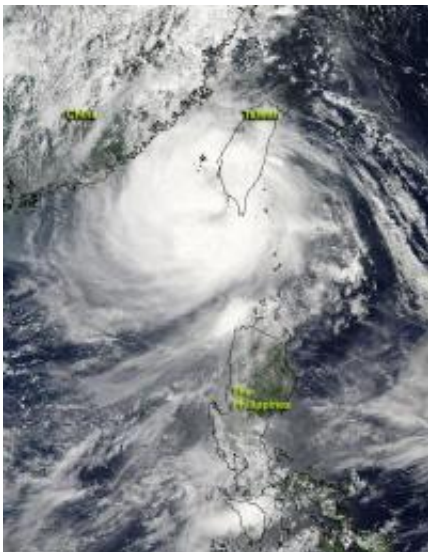


NASA's TRMM satellite saw Tembin on Aug. 23, 2012 at 0943 UTC as it was approaching Taiwan as a typhoon. TRMM's Precipitation Radar (PR) data showed that Tembin had rain bands containing intense thunderstorms dropping rain at over 100mm/hr west of a well defined eye. A 3-D view from TRMM PR reveals the vertical structure within Tembin. Credit: Credit: NASA/SSAI, Hal Pierce

NASA's Aqua satellite captured an image of Tropical Storm Tembin after it made a quick track across southern Taiwan and re-emerged over the open waters of the Philippine Sea.

On Aug. 24 at 05:15 UTC (12:15 a.m. EDT), [NASA's](#) Aqua satellite

flew over [Tropical Storm](#) Tembin and the Moderate Resolution Imaging Spectroradiometer (MODIS) instrument captured a visible image of the storm after it had crossed southern Taiwan and re-emerged into the waters of the Philippine Sea. After Tembin interacted with the land, the storm's eye was no longer visible. The storm has also become somewhat larger since crossing Taiwan and weakening. Tropical-storm-force winds extend out 145 nautical miles (170 miles/268.5 km) from the center making the storm 290 nautical miles (333.7 miles/537.1 km) in diameter.



On Aug. 24 at 05:15 UTC (12:15 am EDT), NASA's Aqua satellite flew over Typhoon Tembin after it had crossed southern Taiwan and re-emerged into the waters of the Philippine Sea. Credit: Credit: NASA Goddard MODIS Rapid Response Team

Warnings are still in effect in Taiwan on Aug. 24. Warning areas include: Nantou County, Yunlin County, Chiayi County, Chiayi City, Tainan City, Kaohsiung City, Pingtung County, Hualien County, Taitung County, Hengchun Peninsula, Penghu County. In the Philippines,

warnings are also still in effect. Public storm warning signal #2 is in effect for the Batanes group of islands, and Public storm warning signal #1 is in effect for the Calayan and Babuyan group of islands.

On Aug. 24, Tropical Storm Tembin (known as Igme in the Philippines) had [maximum sustained winds](#) near 60 knots (69 mph/111 kmh). It was located about 180 nautical miles (207.1 miles/222.4 km) south-southwest of Taipei, Taiwan, near 22.3 North and 119.8 East. Tembin was moving to the west-southwest near 5 knots (5.7 mph/9.26 kmh) and is expected to loop.

Typhoon Bolaven is over 700 nautical miles (805 miles/1,296 km) away and doesn't appear to have any effect on Tropical Storm Tembin. Tembin is expected to make a cyclonic loop over the ocean and then head northeast through the Taiwan Strait, skirting the east coast of Taiwan as it moves toward South Korea early next week.

Provided by NASA's Goddard Space Flight Center

Citation: Tropical Storm Tembin crossed over Taiwan, back over water (2012, August 24) retrieved 25 April 2024 from <https://phys.org/news/2012-08-tropical-storm-tembin-taiwan.html>

This document is subject to copyright. Apart from any fair dealing for the purpose of private study or research, no part may be reproduced without the written permission. The content is provided for information purposes only.