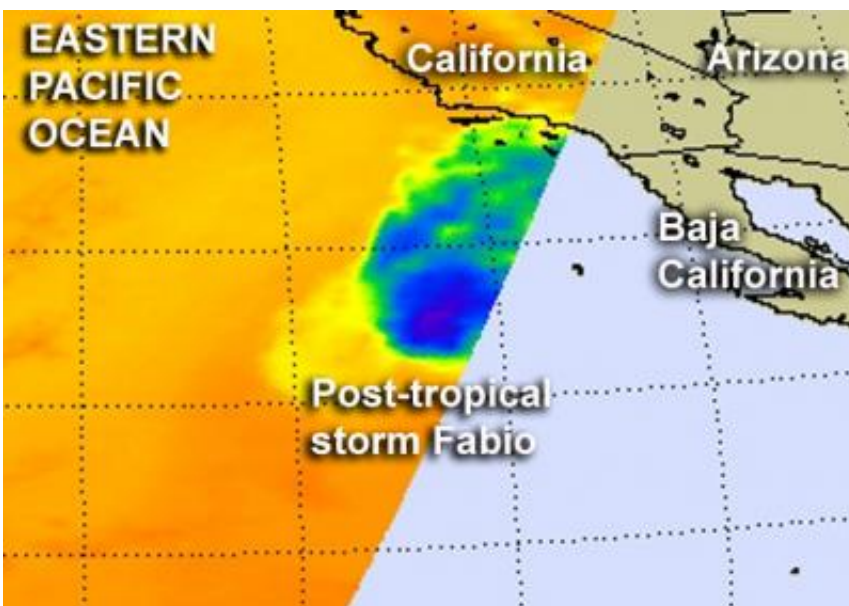


NASA sees withering post-tropical storm Fabio moving toward coast

July 18 2012



When NASA's Aqua satellite passed over post-tropical storm Fabio on July 18 at 1023 UTC (6:23 a.m. EDT) it detected very little strong convection and heavy rainfall (blue area). Sea surface temperature dropped below 22 Celsius (71.6 Fahrenheit) and can't support a tropical cyclone. Credit: Credit: NASA JPL, Ed Olsen

Infrared satellite data from NASA's Aqua satellite showed a very small area of strong thunderstorms north of the center of what is now post-tropical storm Fabio as it moves toward the southern California coast.

When NASA's Aqua satellite passed over post-tropical storm Fabio on

July 18 at 1023 UTC (6:23 a.m. EDT), the Atmospheric Infrared Sounder (AIRS) instrument captured temperatures of [cloud tops](#) and the sea surface. AIRS data showed very little strong convection and heavy rainfall occurring in the post-tropical storm and it was north of the center of circulation. [Wind shear](#) from the south is pushing the showers north of the center.

[Sea surface temperatures](#) are not warm enough to support a tropical cyclone because they are colder than 22 Celsius (71.6 Fahrenheit) in the area Fabio is moving through.

At 11 a.m. EDT on July 18, the National Hurricane Center issued their final advisory on post-tropical storm Fabio. At that time, Fabio was about 535 miles (855 km) south-southwest of San Diego, California, near latitude 25.7 north and longitude 120.8 west. Fabio's [maximum sustained winds](#) were near 30 mph (45 kmh) and weakening. It was still moving to the north at 9 mph (15 kmh) but is expected to turn to the north-northeast.

Doppler radar images from San Diego, Calif. showed some shower activity from Fabio approaching the area at 11 a.m. EDT on July 18.

The National Hurricane Center expects Fabio to dissipate in a couple of days. Meanwhile, large ocean swells, rip tides and dangerous surf conditions continue to affect the coasts of Baja California, Mexico and southern California.

Provided by NASA's Goddard Space Flight Center

Citation: NASA sees withering post-tropical storm Fabio moving toward coast (2012, July 18) retrieved 26 April 2024 from <https://phys.org/news/2012-07-nasa-withering-post-tropical-storm-fabio.html>

This document is subject to copyright. Apart from any fair dealing for the purpose of private study or research, no part may be reproduced without the written permission. The content is provided for information purposes only.