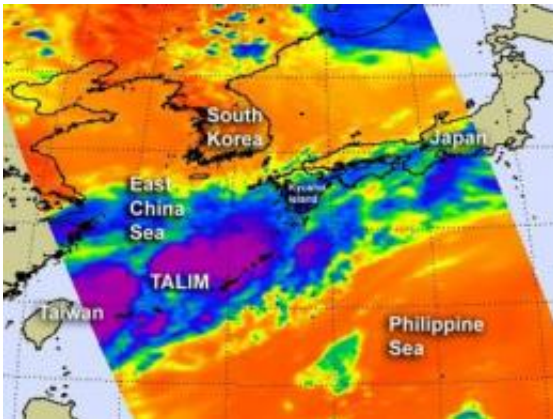


NASA sees Tropical Depression Talim becoming disorganized

June 21 2012



NASA's AIRS instrument (on the Aqua satellite) captured this infrared image of Tropical Depression Talim on June 21 at 3:29 a.m. EDT. The remaining scattered strongest thunderstorms have high, cold cloud tops of -63F (-52C).
Credit: NASA/JPL, Ed Olsen

Tropical Storm Talim has weakened overnight due to stronger wind shear and land interaction and is now a depression. NASA satellite data from June 21 revealed that the thunderstorms that make up the tropical cyclone are scattered and disorganized.

NASA's Aqua satellite Atmospheric Infrared Sounder (AIRS) instrument captured an infrared image of Tropical Depression Talim on June 21 at 3:29 a.m. EDT. The imagery showed several areas of strong thunderstorms, but they're now scattered in nature as a result of the two

factors. As Talim moved over Taiwan and interacted with the land it weakened. Another factor that added to its rapid weakening was an increase in [vertical wind shear](#) (winds that batter a storm) from a nearby frontal system. The AIRS data did reveal that some of those scattered thunderstorms were still strong and had high, cold cloud tops of -63 Fahrenheit or -52 Celsius. Those thunderstorms were still dropping heavy rainfall and were occurring mostly over open water at the time of the AIRS image.

On June 21, 2012 at 0000 UTC (June 20 at 8 p.m. EDT/U.S.), Talim's [maximum sustained winds](#) were down to 25 knots (28.7 mph/46.3 kph). At that time, Talim was 100 nautical miles (115 miles/185 km) northeast of Taipei, Taiwan and moving east-northeast at 15 knots (17.2 mph/27.7 kph).

Forecasters at the Joint [Typhoon Warning Center](#) expect the depression to dissipate later today as it interacts with a frontal boundary that stretches from the [Sea of Japan](#) to the South China Sea. That system is expected to brush Kyushu Island, Japan.

Provided by NASA's Goddard Space Flight Center

Citation: NASA sees Tropical Depression Talim becoming disorganized (2012, June 21)
retrieved 20 April 2024 from
<https://phys.org/news/2012-06-nasa-tropical-depression-talim-disorganized.html>

<p>This document is subject to copyright. Apart from any fair dealing for the purpose of private study or research, no part may be reproduced without the written permission. The content is provided for information purposes only.</p>
--