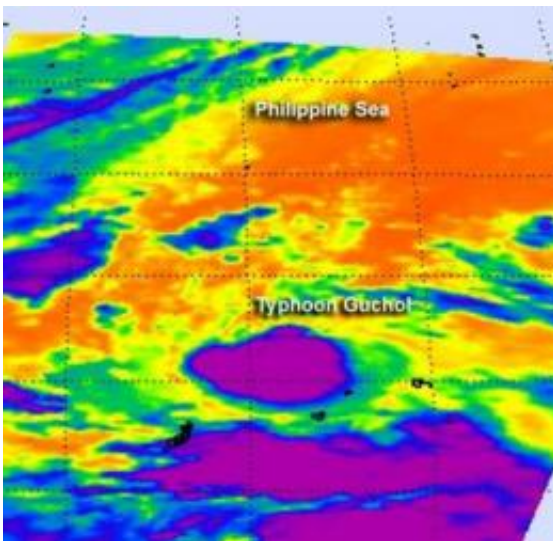


Guchol is a tiny typhoon on NASA satellite imagery

June 14 2012



NASA's Aqua satellite flew over Typhoon Guchol on June 13 at 1635 UTC (12:35 p.m. EDT) and captured an infrared view of the storm's clouds and temperatures. The AIRS instrument on Aqua captured infrared and temperature data on Guchol. The lowest temperatures were as cold as or colder than 220 degrees Kelvin or minus 63 degrees Fahrenheit (-52 Celsius) and appear in purple. Credit: Credit: NASA/JPL, Ed Olsen

Tropical Storm Guchol intensified into a typhoon and is a compact system. It appears as a strong, small typhoon in infrared NASA satellite imagery today.

NASA's Aqua satellite flew over Typhoon Guchol on June 13 and 14

and captured an [infrared view](#) of the storm's clouds and temperatures. The Atmospheric Infrared Sounder (AIRS) instrument that flies on NASA's Aqua satellite captured infrared and [temperature data](#) on Guchol. When cloud temperatures get colder, it means that clouds are getting higher. The lowest temperatures were as cold as or colder than 220 degrees Kelvin or minus 63 degrees Fahrenheit (-52 Celsius). The imagery also showed a small, compact system with a central dense overcast, about 120 miles (~193 km) in diameter. [Satellite imagery](#) also showed tightly-curved bands of thunderstorms wrapping into a well-defined low-level circulation center.

As Guchol is expected to impact the east central and northeastern Luzon over the next couple of days, [forecasters](#) in the Philippines are calling Guchol "Butchoy."

At 1500 UTC (11 a.m. EDT/U.S. or 11 p.m. Asia/Manila time, Philippines), Guchol had [maximum sustained winds](#) near 70 knots (~80 mph/~130 kph). Tropical storm-force winds extend out about 60 miles (96.5 km) from the center (making the storm about 120 miles (193.1 km) in diameter), while typhoon-force winds extend only 20 nautical miles (23 miles/37 km) from the center.

It was located about 750 nautical miles (863.1 miles/1389 km) east-southeast of Manila, Philippines near 10.8 North and 132.7 East, so it was quite a distance from land. It was moving to the west near 12 knots (~14 mph/~22 kph). Typhoon Guchol is still on track to brush east central and northern Luzon, Philippines beginning June 15 as it moves north-northeast and toward southern Japan. Interests in the Philippines and Okinawa, Japan should monitor the progress of this storm.

Provided by NASA's Goddard Space Flight Center

Citation: Guchol is a tiny typhoon on NASA satellite imagery (2012, June 14) retrieved 20 June 2024 from <https://phys.org/news/2012-06-guchol-tiny-typhoon-nasa-satellite.html>

This document is subject to copyright. Apart from any fair dealing for the purpose of private study or research, no part may be reproduced without the written permission. The content is provided for information purposes only.