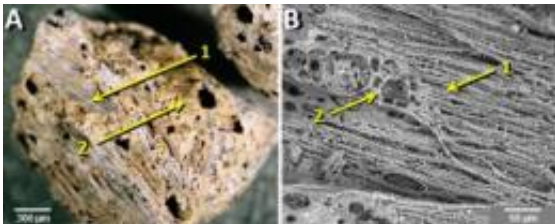


# New evidence supporting theory of extraterrestrial impact found

June 11 2012

---



These are microscopic images of grains of melted quartz from the YDB cosmic impact layer at Abu Hureyra, Syria, showing evidence of burst bubbles and flow textures that resulted from the melting and boiling of rock at very high temperatures. (Light microscope image at left; SEM image at right.) Credit: UCSB

An 18-member international team of researchers that includes James Kennett, professor of earth science at UC Santa Barbara, has discovered melt-glass material in a thin layer of sedimentary rock in Pennsylvania, South Carolina, and Syria. According to the researchers, the material — which dates back nearly 13,000 years — was formed at temperatures of 1,700 to 2,200 degrees Celsius (3,100 to 3,600 degrees Fahrenheit), and is the result of a cosmic body impacting Earth.

These new data are the latest to strongly support the controversial Younger Dryas Boundary (YDB) hypothesis, which proposes that a [cosmic impact](#) occurred 12,900 years ago at the onset of an unusual cold climatic period called the Younger Dryas. This episode occurred at or

close to the time of major extinction of the North American megafauna, including mammoths and giant ground sloths; and the disappearance of the prehistoric and widely distributed Clovis culture. The researchers' findings appear today in the *Proceedings of the National Academy of Sciences*.

"These scientists have identified three contemporaneous levels more than 12,000 years ago, on two continents yielding siliceous scoria-like objects (SLO's)," said H. Richard Lane, program director of National Science Foundation's Division of [Earth Sciences](#), which funded the research. "SLO's are indicative of high-energy cosmic airbursts/impacts, bolstering the contention that these events induced the beginning of the Younger Dryas. That time was a major departure in biotic, human and climate history."

Morphological and geochemical evidence of the melt-glass confirms that the material is not cosmic, volcanic, or of human-made origin. "The very high temperature melt-glass appears identical to that produced in known cosmic impact events such as Meteor Crater in Arizona, and the Australasian tektite field," said Kennett.

"The melt material also matches melt-glass produced by the Trinity nuclear airburst of 1945 in Socorro, New Mexico," he continued. "The extreme temperatures required are equal to those of an atomic bomb blast, high enough to make sand melt and boil."



These are photos of melt glass known as trinitite formed at the ground surface

from the melting of sediments and rocks by the very high temperatures of the Trinity nuclear airburst in New Mexico in 1945. This material is very similar to the glassy melt materials now reported from the cosmic impact YDB layer, consistent with the very high temperature origin of the melt materials in the YDB layer. Credit: UCSB

The material evidence supporting the YDB cosmic impact hypothesis spans three continents, and covers nearly one-third of the planet, from California to Western Europe, and into the Middle East. The discovery extends the range of evidence into Germany and Syria, the easternmost site yet identified in the northern hemisphere. The researchers have yet to identify a limit to the debris field of the impact.

"Because these three sites in North America and the Middle East are separated by 1,000 to 10,000 kilometers, there were most likely three or more major impact/airburst epicenters for the YDB impact event, likely caused by a swarm of cosmic objects that were fragments of either a meteorite or comet," said Kennett.

The PNAS paper also presents examples of recent independent research that supports the YDB cosmic impact hypothesis, and supports two independent groups that found melt-glass in the YDB layers in Arizona and Venezuela. "The results strongly refute the assertion of some critics that 'no one can replicate' the YDB evidence, or that the materials simply fell from space non-catastrophically," Kennett noted.

He added that the archaeological site in Syria where the melt-glass material was found — Abu Hureyra, in the Euphrates Valley — is one of the few sites of its kind that record the transition from nomadic hunter-gatherers to farmer-hunters who live in permanent villages.

"Archeologists and anthropologists consider this area the 'birthplace of

agriculture,' which occurred close to 12,900 years ago," Kennett said.

"The presence of a thick charcoal layer in the ancient village in [Syria](#) indicates a major fire associated with the melt-glass and impact spherules 12,900 years ago," he continued. "Evidence suggests that the effects on that settlement and its inhabitants would have been severe."

Provided by University of California - Santa Barbara

Citation: New evidence supporting theory of extraterrestrial impact found (2012, June 11)  
retrieved 10 April 2024 from

<https://phys.org/news/2012-06-evidence-theory-extraterrestrial-impact.html>

<p>This document is subject to copyright. Apart from any fair dealing for the purpose of private study or research, no part may be reproduced without the written permission. The content is provided for information purposes only.</p>
--