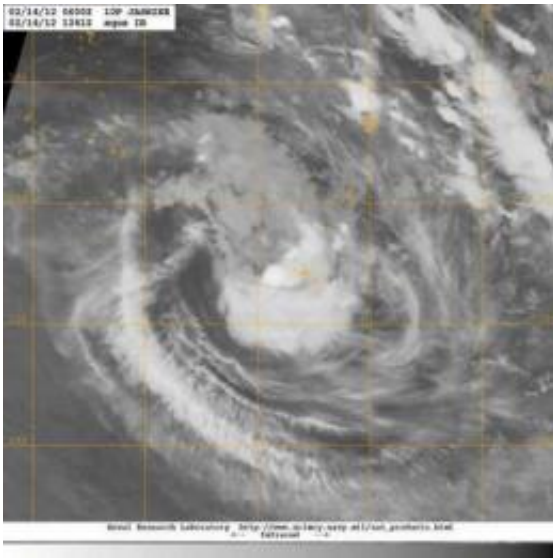


NASA sees Tropical Cyclone Jasmine near Tonga

February 14 2012



On Feb. 14, 2012 at 1241 UTC (7:41 a.m.), the MODIS instrument on NASA's Terra Satellite captured this infrared image of Cyclone Jasmine near Tonga. The strongest thunderstorms and heaviest rainfall appear to be on the northeastern quadrant of the storm. Credit: NASA/NRL

Tropical Cyclone Jasmine is still lingering near the island nation of Tonga in the South Pacific and was captured in an infrared image from NASA's Aqua satellite. Jasmine is bringing gusty winds and heavy rainfall to some of Tonga's islands.

When Aqua flew over Cyclone Jasmine on February 14, 2012 at 1241 UTC (7:41 a.m.), the Moderate Resolution Imaging Spectroradiometer

(MODIS) instrument captured an [infrared image](#) of its clouds. The image showed the strongest thunderstorms and heaviest rainfall appear to be on the northeastern quadrant of the storm.

A gale warning is in force for the Tongatapu group of islands. The islands are experiencing gusty winds and heavy rainfall as Jasmine creeps away slowly.

On February 14 at 0900 UTC, the Joint [Typhoon Warning Center](#) noted that Jasmine's center was just 25 nautical miles (28.7 miles/46.3 km) west-southwest of Tonga, near 21.3 South and 175.6 West. It was bringing gusty winds and rainfall to Tonga today, and is expected to start moving away to the south at 5 knots (~6 mph/~9 kph). Jasmine's [maximum sustained winds](#) were near 45 knots (~52 mph/~83 kph) but it is expected to strengthen a little as it moves away through warmer waters.

Provided by NASA's Goddard Space Flight Center

Citation: NASA sees Tropical Cyclone Jasmine near Tonga (2012, February 14) retrieved 7 August 2024 from <https://phys.org/news/2012-02-nasa-tropical-cyclone-jasmine-tonga.html>

This document is subject to copyright. Apart from any fair dealing for the purpose of private study or research, no part may be reproduced without the written permission. The content is provided for information purposes only.
