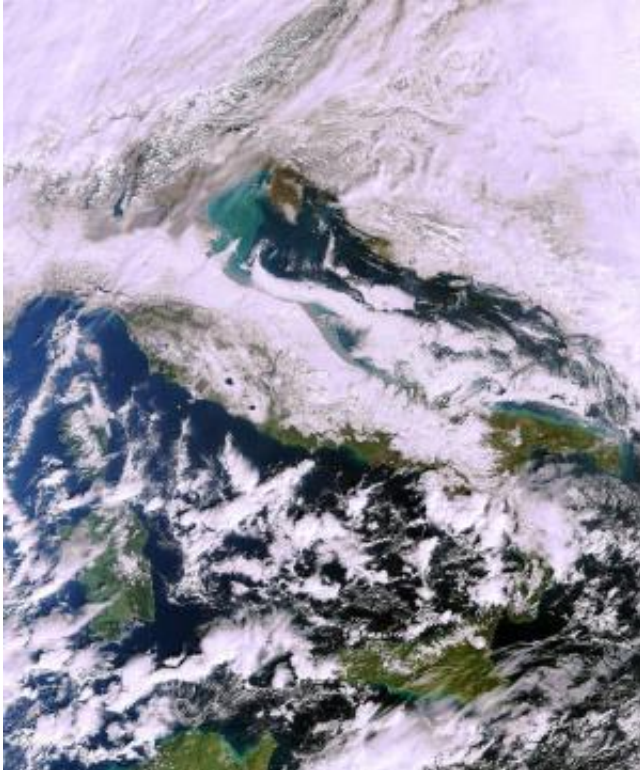


Image: Snow-bound Italy

February 14 2012



Captured by Envisat's MERIS instrument on 13 February, this image shows an unusual view of Italy: almost all of the country is covered with snow. Credits: ESA

ESA's Envisat satellite has captured some unusual views of Italy after much the country suffered heavy snowfall a for second time in a week.

Practically the whole of the north and central parts of the country are covered with snow, including the low-lying Po River valley. Snow is, of

course, common during the winter in northern and Alpine areas, but last week regions such as Tuscany and Lazio further south have been dealing with heavy falls – causing significant disruption.

This image was captured by Envisat's MERIS instrument at 09:30 GMT on 13 February 2012.

Provided by European Space Agency

Citation: Image: Snow-bound Italy (2012, February 14) retrieved 11 May 2024 from <https://phys.org/news/2012-02-image-snow-bound-italy.html>

This document is subject to copyright. Apart from any fair dealing for the purpose of private study or research, no part may be reproduced without the written permission. The content is provided for information purposes only.