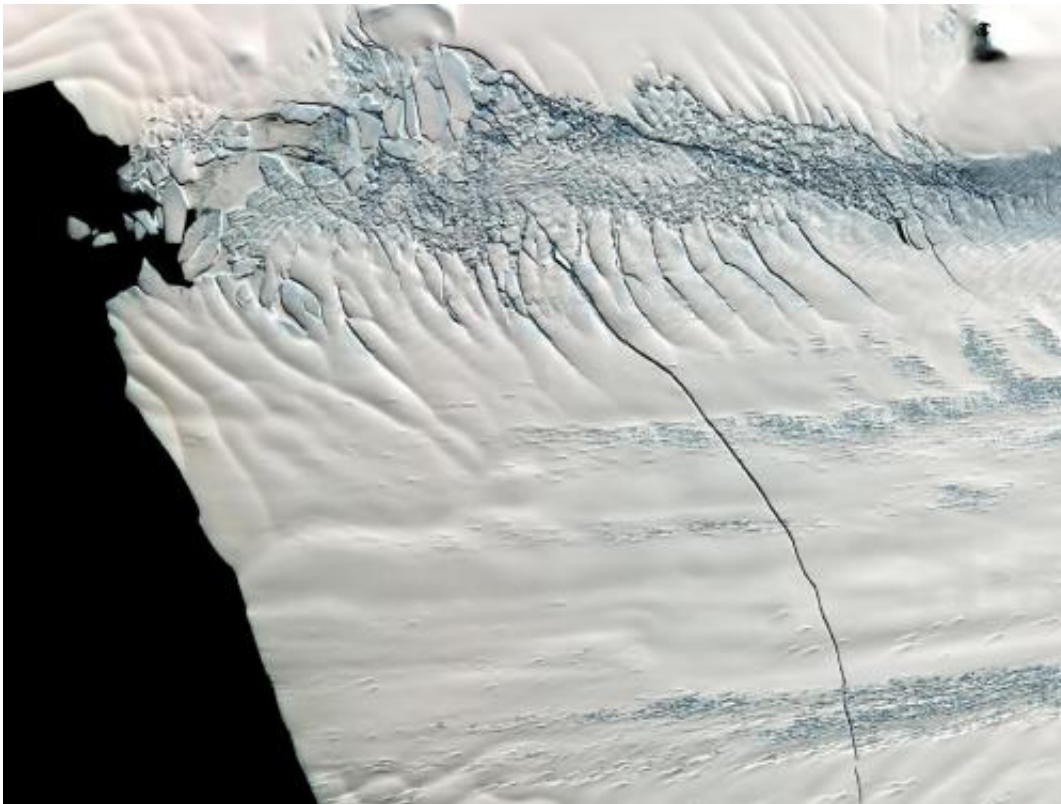


Image: Crack discovered in Pine Island Glacier

February 1 2012



Credit: NASA/GSFC/METI/ERSDAC/JAROS, and U.S./Japan ASTER Science Team

(PhysOrg.com) -- In mid-October 2011, NASA scientists working in Antarctica discovered a massive crack across the Pine Island Glacier, a major ice stream that drains the West Antarctic Ice Sheet. Extending for 19 miles (30 kilometers), the crack was 260 feet (80 meters) wide and

195 feet (60 meters) deep.

Eventually, the crack will extend all the way across the glacier, and calve a giant iceberg that will cover about 350 square miles (900 square kilometers).

This image from the [Advanced Spaceborne Thermal Emission and Reflection Radiometer \(ASTER\)](#) instrument on NASA's Terra spacecraft was acquired Nov. 13, 2011, and covers an area of 27 by 32 miles (44 by 52 kilometers), and is located near 74.9 degrees south latitude, 101.1 degrees west longitude.

Provided by JPL/NASA

Citation: Image: Crack discovered in Pine Island Glacier (2012, February 1) retrieved 23 April 2024 from <https://phys.org/news/2012-02-image-island-glacier.html>

This document is subject to copyright. Apart from any fair dealing for the purpose of private study or research, no part may be reproduced without the written permission. The content is provided for information purposes only.