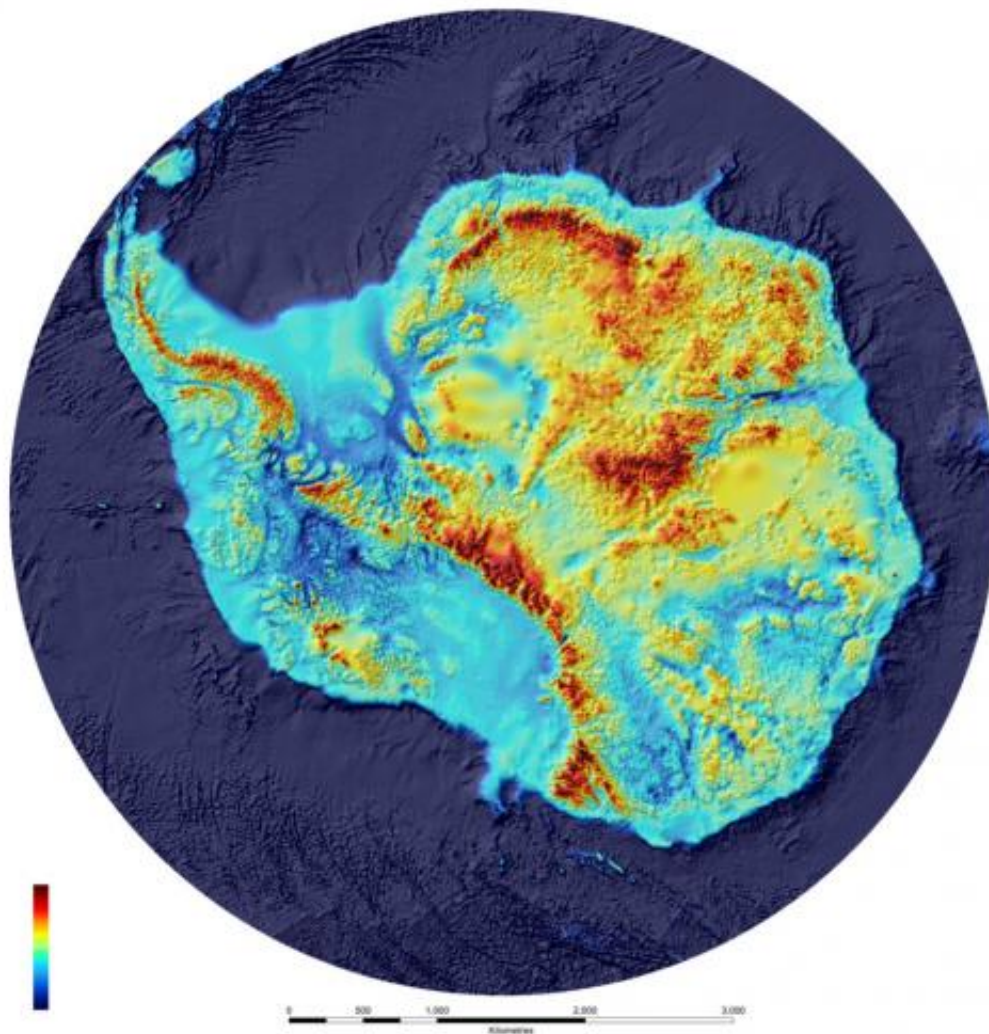


New map reveals what lies beneath the frozen continent

December 6 2011



The new BEDMAP of Antarctica is being presented at the AGU meeting in the US this week

Scientists at British Antarctic Survey (BAS) have produced the most detailed map of underneath Antarctica -- its rock bed.

BEDMAP is a close-up view of the landscape beneath the Antarctic icesheet and incorporates decades of survey data acquired by planes, satellites, ships and even researchers on dog-drawn sleds.

Dr Hamish Pritchard from BAS is presenting the new imagery today to the 2011 [American Geophysical Union](#) (AGU) Fall Meeting, the world's largest annual gathering of Earth and planetary scientists.

Provided by British Antarctic Survey

Citation: New map reveals what lies beneath the frozen continent (2011, December 6) retrieved 24 April 2024 from <https://phys.org/news/2011-12-reveals-lies-beneath-frozen-continent.html>

This document is subject to copyright. Apart from any fair dealing for the purpose of private study or research, no part may be reproduced without the written permission. The content is provided for information purposes only.