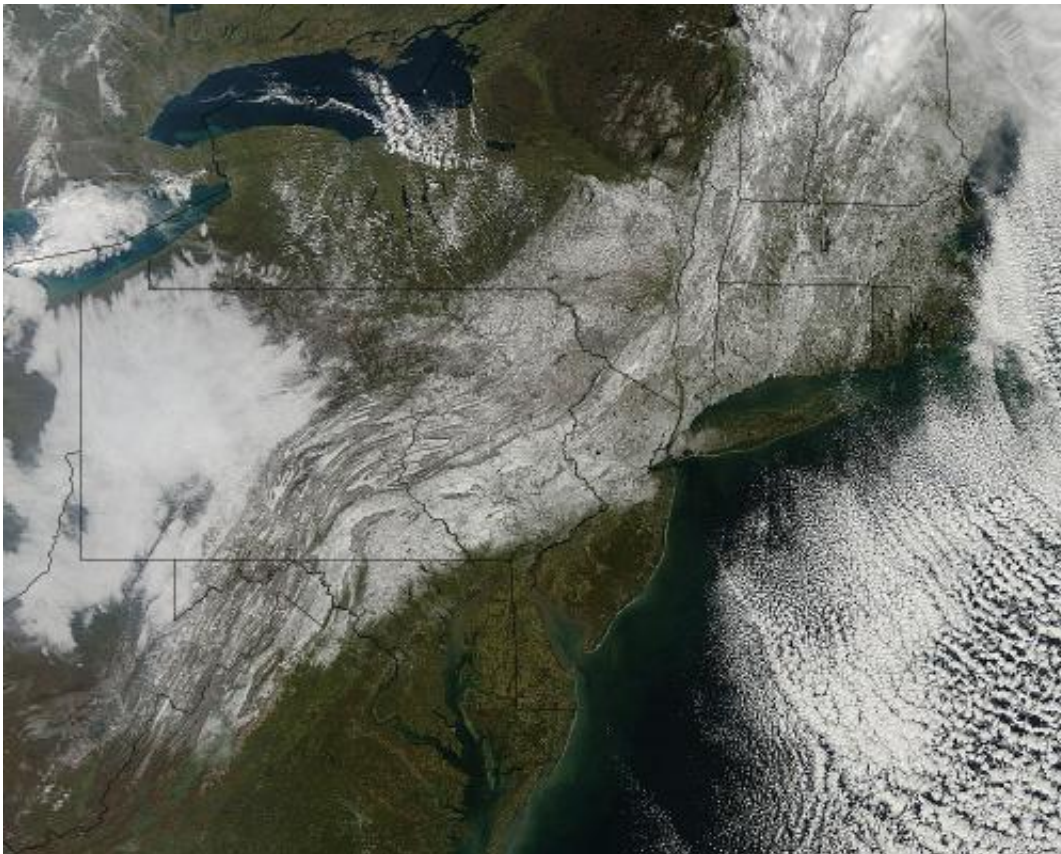


# Halloween weekend snow paints a ghostly picture in the U.S. northeast

November 1 2011, By Rob Gutro

---



This visible image from the MODIS instrument on NASA's Aqua satellite on October 30, 2011 at 11:30 a.m. EDT shows the extent of snowfall from the Halloween weekend Nor'easter that spread snow from West Virginia to Maine along the U.S. East coast. The snow is seen blanketing the ground, while clouds remain off-shore over the Atlantic Ocean. Credit: NASA Goddard MODIS Rapid Response Team

(PhysOrg.com) -- A late October snowstorm from a Nor'easter blanketed the eastern U.S. from West Virginia to Maine and broke records the weekend before Halloween Monday. NASA's Aqua satellite flew over the region on October 30 after the snow was ending in New England and captured the ghostly blanket of white.

A high pressure area located over southeastern Canada was responsible for bringing in [cold air](#) and that combined with a low near the North Carolina coast this weekend. The result was an unusual [snowstorm](#) from West Virginia to Maine. As the low moved north, the winds picked up in New England creating heavy wet snow and gusty winds that took down trees and power lines. More than 3 million people were without power over the weekend and many are still without power. [Snowfall](#) ranged from a trace near Washington, D.C. to 27 inches in Plainfield, located in western Massachusetts.

When NASA's Aqua satellite passed over the northeastern U.S. on October 30, 2011 at 11:30 a.m. EDT, the Moderate Resolution Imaging Spectroradiometer (MODIS) instrument captured a detailed image of the ghostly snowfall. The image clearly shows the snow on the ground from West Virginia to Maine along the U.S. East coast. The image was created at NASA's Goddard Space Flight Center in Greenbelt, Md.

Although the snowfall is over, the damage will haunt New Jersey, Connecticut, western Massachusetts and parts of New York, who were hardest hit.

Provided by JPL/NASA

Citation: Halloween weekend snow paints a ghostly picture in the U.S. northeast (2011, November 1) retrieved 27 April 2024 from <https://phys.org/news/2011-11-halloween-weekend-ghostly-picture-northeast.html>

This document is subject to copyright. Apart from any fair dealing for the purpose of private study or research, no part may be reproduced without the written permission. The content is provided for information purposes only.