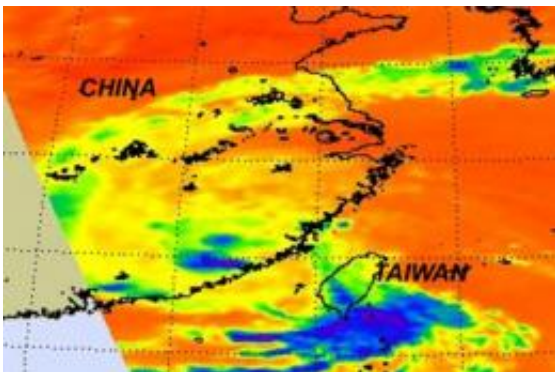


NASA sees Tropical Storm Nanmadol's landfall, Talas headed to Japan

August 31 2011



AIRS infrared image captured on Aug. 31 at 1:05 EDT, shows Nanmadol was dissipating quickly over mainland China with the lack of high, thunderstorm clouds (blue). Most of the remnants of Nanmadol are lower, warmer clouds (green). Credit: Credit: NASA/JPL, Ed Olsen

Tropical Storm Nanmadol made landfall in southeastern China's Fujian Province and is now a depression, while further east, Tropical Storm Talas is still headed for Japan.

Infrared satellite imagery from The Atmospheric Sounder Instrument (AIRS) aboard NASA's Aqua satellite shows two different stories in the [tropical cyclones](#).

AIRS captured an [infrared image](#) of Nanmadol on Aug. 31 at 1:05 EDT dissipating quickly over mainland China with a lack of high,

thunderstorm clouds. Most of the remnants of Nanmadol are lower, warmer clouds.

Tropical Storm Nanmadol made landfall about 2.00 a.m. local time on Aug. 31 (2 p.m. EDT on Aug. 30), in Jinjiang city, located in the Fujian Province, (southeastern) China. Nanmadol was a tropical storm at the time of landfall with sustained winds reported near 44 mph (72 kmh). By 8 a.m. local time/China on August 31 (August 30 at 8 p.m. EDT), Nanmadol's [maximum sustained winds](#) dropped down to 25 knots (29 mph/46 kmh), and it continued to move inland at 4 knots (5 mph/7 kmh). It was located near 24.9 North and 118.7 East. It is expected to dissipate later today or tomorrow.

Agence France-Press reported that Nanmadol destroyed hundreds of homes in Taiwan earlier this week.

AIRS [infrared imagery](#) of Tropical Storm Talas late on Aug. 30 (11:29 p.m. EDT) showed the large eastern half contained strong, high, [thunderstorm clouds](#) around the center where cloud top temperatures exceed -63F (-52C).

Today, Tropical Storm Talas is still working toward a landfall. The Joint [Typhoon Warning Center](#) forecasts a landfall in southern Japan on September 2. Talas still had maximum sustained winds near 55 knots (63 mph/103 kmh), as it did yesterday.

It was located about 465 miles (748 km) south of Kyoto, Japan, near 27.3 North and 136.8 East. It was moving to the northwest at 5 knots (6 mph/XXX). Talas is still a large storm with tropical storm-force winds extending out 210 miles, making it at least 420 miles (675 km) in diameter. Talas continues to intensify as it moves northward. Talas is expected to make landfall Friday and then become extra-tropical after crossing Japan and moving into the Sea of Japan.

Provided by NASA's Goddard Space Flight Center

Citation: NASA sees Tropical Storm Nanmadol's landfall, Talas headed to Japan (2011, August 31) retrieved 20 April 2024 from <https://phys.org/news/2011-08-nasa-tropical-storm-nanmadol-landfall.html>

This document is subject to copyright. Apart from any fair dealing for the purpose of private study or research, no part may be reproduced without the written permission. The content is provided for information purposes only.