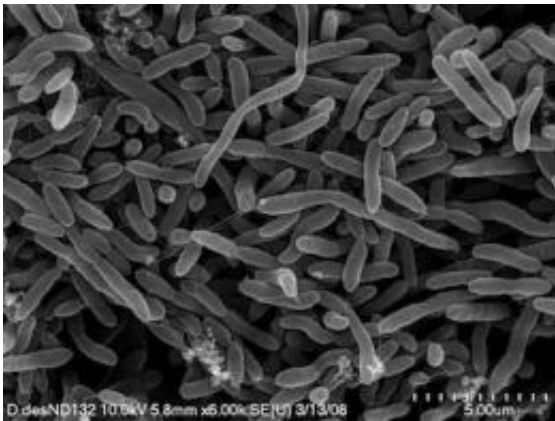


# Bacterial genome may hold answers to mercury mystery

April 8 2011

---



A bacterium called *Desulfovibrio desulfuricans* strain ND132 can transform elemental mercury into methylmercury, a human neurotoxin.

A newly sequenced bacterial genome from a team led by the Department of Energy's Oak Ridge National Laboratory could contain clues as to how microorganisms produce a highly toxic form of mercury.

Methylmercury, a potent human [neurotoxin](#), appears in the environment when certain naturally occurring bacteria transform inorganic mercury into its more toxic cousin. Few [bacterial species](#) are capable of this conversion, and exactly how the transformation takes place has been a matter of debate for decades.

"What is not known are the genes or the proteins that allow these

bacteria to mediate the transformation," said ORNL's Steven Brown, who led a research team to sequence the genome of a [bacterium](#) in the *Desulfovibrio* [genus](#) that is capable of methylating mercury.

The new genome, sequenced at the California-based DOE Joint Genome Institute (JGI) and published in the *Journal of Bacteriology*, lays the foundation for future research to examine the little understood mechanisms behind the production of methylmercury.

*Desulfovibrio desulfuricans* strain ND132 is an organism that thrives in sediments and soils without oxygen – the places in lakes, streams and wetlands where mercury contamination is converted to methylmercury. It is representative of a group of organisms that "breathe" sulfate instead of oxygen and are largely responsible for mercury methylation in nature.

"This is the first *Desulfovibrio* genome that will methylate mercury that's been published," Brown said. "Now that we have this resource, we can take a comparative approach and look at what is different between the bacteria that can methylate mercury and those that are unable to."

The introduction of mercury into the environment primarily stems from its use in industrial processes and from the burning of fossil fuels. Although industry and regulators have worked to minimize the release of mercury, there is a legacy of mercury pollution in aquatic environments worldwide. Understanding the fundamental science behind the production of methylmercury could eventually help mitigate and reduce the impacts of mercury pollution.

"Mercury is a global contaminant of concern," Brown said. "We hope that some of the lessons we learn from these studies will be applicable to many sites. If we can identify the genes involved in mercury methylation, we hope to go to the local environment and understand more about the function and the ecology of the organisms and their gene

products that mediate this transformation."

**More information:** The study was published as "Genome Sequence of the Mercury Methylating Strain *Desulfovibrio desulfuricans* ND132."

Provided by Oak Ridge National Laboratory

Citation: Bacterial genome may hold answers to mercury mystery (2011, April 8) retrieved 26 April 2024 from <https://phys.org/news/2011-04-bacterial-genome-mercury-mystery.html>

This document is subject to copyright. Apart from any fair dealing for the purpose of private study or research, no part may be reproduced without the written permission. The content is provided for information purposes only.