

Space image: On approach

March 2 2011

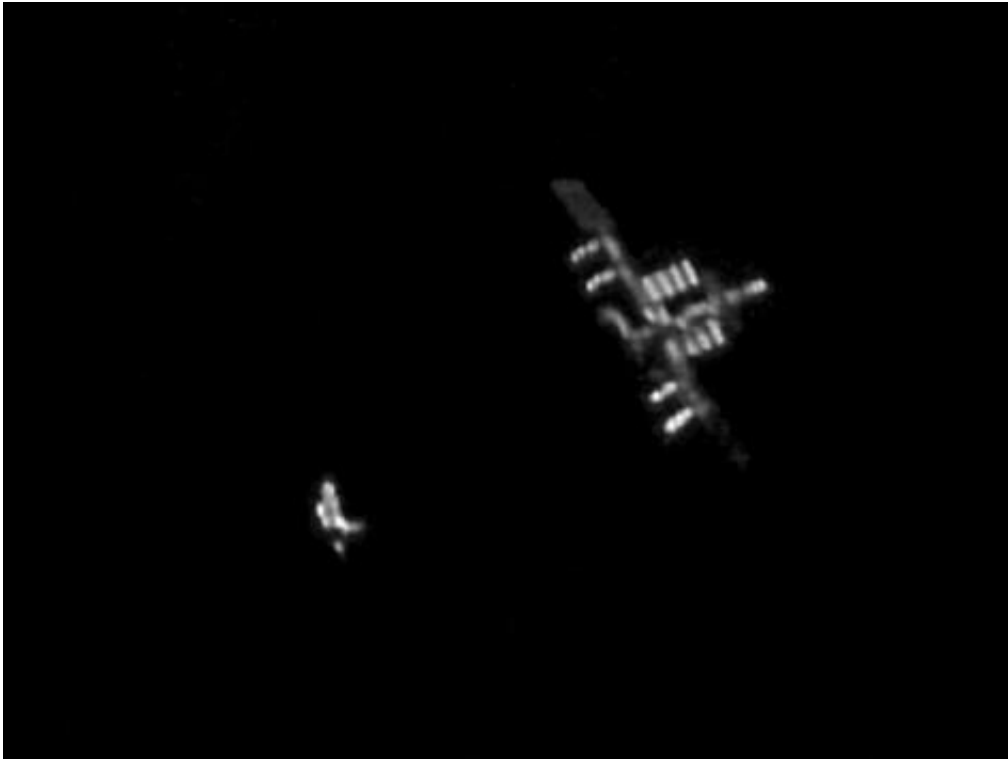


Image Credit: Rob Bullen (Used by permission)

After a very cloudy day at Forest of Dean, Gloucestershire, England, the skies cleared to allow a view of this stunning pass of the ISS and Discovery on Feb. 26, 2011.

Photographer Rob Cullen, who captured this breath-taking view of the [shuttle Discovery](#) and the space station, said, "I could not believe the timing was so fortuitous to show the shuttle closing in on the station."

"I captured this, what I guess could potentially be, a once in a lifetime image of these two spaceships traveling as separate craft using Canon EOS 40D using eyepiece projection through a hand guided 8.5 inch Newton."

Provided by JPL/NASA

Citation: Space image: On approach (2011, March 2) retrieved 26 April 2024 from <https://phys.org/news/2011-03-space-image-approach.html>

This document is subject to copyright. Apart from any fair dealing for the purpose of private study or research, no part may be reproduced without the written permission. The content is provided for information purposes only.