

# Japan quake may have shortened Earth days, moved axis

March 15 2011, By Alan Buis

---



This view of Earth comes from NASA's Moderate Resolution Imaging Spectroradiometer aboard the Terra satellite. Credit: NASA

(PhysOrg.com) -- The March 11, magnitude 9.0 earthquake in Japan may have shortened the length of each Earth day and shifted its axis. But don't worry-you won't notice the difference.

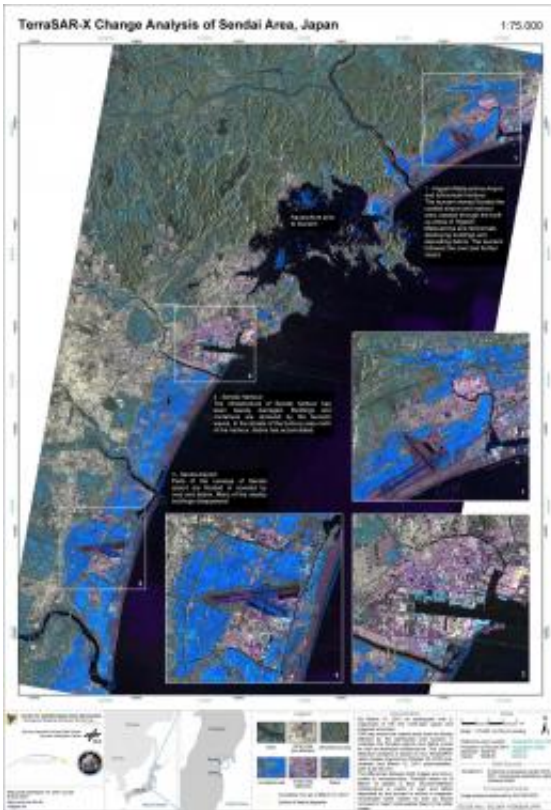
Using a United States Geological Survey estimate for how the fault responsible for the [earthquake](#) slipped, research scientist Richard Gross of NASA's Jet Propulsion Laboratory, Pasadena, Calif., applied a complex model to perform a preliminary theoretical calculation of how the [Japan](#) earthquake-the fifth largest since 1900-affected Earth's rotation. His calculations indicate that by changing the distribution of Earth's mass, the Japanese earthquake should have caused Earth to rotate a bit faster, shortening the length of the day by about 1.8 microseconds (a microsecond is one millionth of a second).

The calculations also show the Japan [quake](#) should have shifted the position of Earth's figure axis (the axis about which Earth's mass is balanced) by about 17 centimeters (6.5 inches), towards 133 degrees east longitude. Earth's figure axis should not be confused with its north-south axis; they are offset by about 10 meters (about 33 feet). This shift in Earth's figure axis will cause Earth to wobble a bit differently as it rotates, but it will not cause a shift of Earth's axis in space-only external forces such as the [gravitational attraction](#) of the sun, moon and planets can do that.

Both calculations will likely change as data on the quake are further refined.

In comparison, following last year's magnitude 8.8 earthquake in Chile, Gross estimated the Chile quake should have shortened the length of day by about 1.26 microseconds and shifted Earth's figure axis by about 8 centimeters (3 inches). A similar calculation performed after the 2004 magnitude 9.1 Sumatran earthquake revealed it should have shortened the length of day by 6.8 microseconds and shifted Earth's figure axis by

about 7 centimeters, or 2.76 inches. How an individual earthquake affects Earth's rotation depends on its size (magnitude), location and the details of how the fault slipped.



TerraSAR-X Change Analysis of Sendai Area, Japan. Map shows coastal area of Sendai effected by 9,0 magnitude Earthquake that triggered ensuing massively destructive Tsunami, killings untold thousands and threatens the safety of several Japanese Nuclear reactors. Credit: Deutsches Zentrum fur Luft- und Raumfahrt (DLR) - German Aerospace Center

Gross said that, in theory, anything that redistributes Earth's mass will change Earth's rotation.

"Earth's rotation changes all the time as a result of not only earthquakes,

but also the much larger effects of changes in atmospheric winds and oceanic currents," he said. "Over the course of a year, the length of the day increases and decreases by about a millisecond, or about 550 times larger than the change caused by the Japanese earthquake. The position of Earth's figure axis also changes all the time, by about 1 meter (3.3 feet) over the course of a year, or about six times more than the change that should have been caused by the Japan quake."

Gross said that while we can measure the effects of the atmosphere and ocean on Earth's rotation, the effects of earthquakes, at least up until now, have been too small to measure. The computed change in the length of day caused by earthquakes is much smaller than the accuracy with which scientists can currently measure changes in the length of the day. However, since the position of the figure axis can be measured to an accuracy of about 5 centimeters (2 inches), the estimated 17-centimeter shift in the figure axis from the Japan quake may actually be large enough to observe if scientists can adequately remove the larger effects of the atmosphere and ocean from the [Earth](#) rotation measurements. He and other scientists will be investigating this as more data become available.

Gross said the changes in Earth's rotation and figure axis caused by earthquakes should not have any impacts on our daily lives. "These changes in Earth's rotation are perfectly natural and happen all the time," he said. "People shouldn't worry about them."

Provided by JPL/NASA

Citation: Japan quake may have shortened Earth days, moved axis (2011, March 15) retrieved 18 April 2024 from <https://phys.org/news/2011-03-japan-quake-shortened-earth-days.html>

This document is subject to copyright. Apart from any fair dealing for the purpose of private

study or research, no part may be reproduced without the written permission. The content is provided for information purposes only.