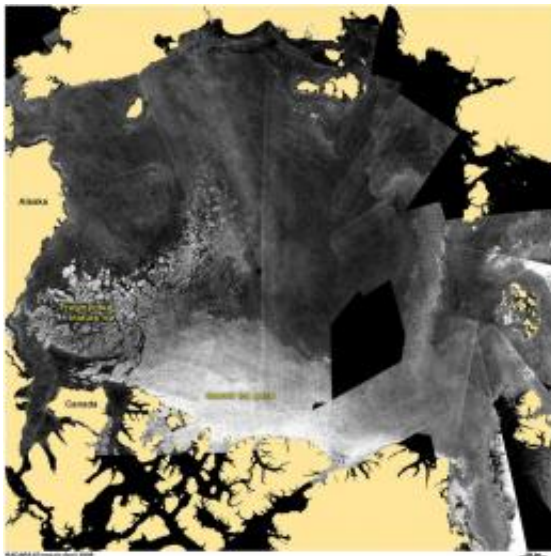


Role of melt in arctic sea ice loss found by NASA study

November 10 2010, By Kathryn Hansen



A mosaic of satellite images shows the movement of fragmented ice away from ice edges, which scientists use to track the loss of multiyear ice due to melt.
Image credit: NASA Earth Observatory

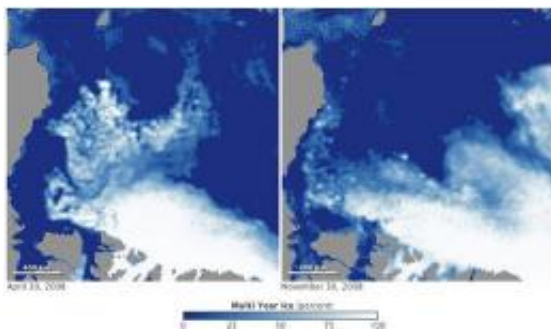
A NASA analysis of satellite data has quantified, for the first time, the amount of older and thicker "multiyear" sea ice lost from the Arctic Ocean due to melting.

Since the start of the satellite record in 1979, scientists have observed the continued disappearance of older "multiyear" sea ice that survives more than one summer melt season. Some scientists suspected that this

loss was due entirely to wind pushing the ice out of the Arctic Basin -- a process that scientists refer to as "export." In this study, Ron Kwok and Glenn Cunningham at NASA's Jet Propulsion Laboratory in Pasadena, Calif., used a suite of [satellite data](#) to clarify the relative role of export versus melt within the Arctic Ocean.

Kwok and Cunningham show that between 1993 and 2009, a significant amount of multiyear ice -- 1,400 cubic kilometers (336 cubic miles) -- was lost due to melt, not export.

"The paper shows that there is indeed melt of old ice within the Arctic basin and the melt area has been increasing over the past several years," Kwok said. "The story is always more complicated -- there is melt as well as export -- but this is another step in calculating the mass and area balance of the Arctic ice cover."



Maps of multiyear sea ice coverage of the Arctic Ocean on April 30, 2008 (left) and again on Nov. 30, 2008 (right) show that a large area of fragmented multiyear ice in the Beaufort Sea disappeared after the ice pack reached its annual summer minimum extent. Image credit: NASA Earth Observatory

The results have implications for understanding how Arctic sea ice gets redistributed, where melt occurs in the Arctic Ocean, and how the ocean,

ice and atmosphere interact as a system to affect Earth's climate. The study was published in October 2010 in [Geophysical Research Letters](#).

Scientists track the annual cycle of [Arctic sea ice](#) coverage as it melts through the summer to reach a minimum extent each September, before refreezing through fall and winter. Much of that ice is seasonal, meaning that it forms and melts within the year.

But multiyear ice that survives more than one season has also been declining, as noted in previous work by Joey Comiso of NASA's Goddard Space Flight Center in Greenbelt, Md., who shows a loss of about 10 percent per decade since the beginning of the satellite record in 1979. Scientists want to know where this loss is occurring.

"The decline of the multiyear ice cover of the last several decades has not been quantitatively explained," Kwok said.

To investigate the loss of multiyear ice, Kwok and Cunningham looked at a 17-year span of data from 1993 to 2009 from a range of polar-observing satellites and instruments, including NASA's Quick Scatterometer (QuikScat); the Ice, Cloud and land Elevation Satellite (ICESat); the Advanced Microwave Scanning Radiometer (AMSR); and the European Space Agency's European Remote Sensing (ERS)-1 and -2 satellites. Some instruments track ice coverage, while others track motion and concentration.

The team collected satellite images and tracked pixels of multiyear ice from April 1, prior to the onset of seasonal melt, and into the summer. Pixels that deviated away from images of the ice edge were considered lost to melt.

The team compared summertime melt of multiyear ice in the Beaufort Sea with estimates of ice lost from the Arctic basin through the Fram

Strait -- a major passage through which ice can exit the Arctic Ocean. The comparison revealed how much multiyear ice was lost to export and how much was lost to melt.

They found that over the 17-year period, an area of 947,000 square kilometers (365,639 square miles), or about 32 percent of the decline in multiyear sea ice area, was lost in the Beaufort Sea due to melt.

A similar calculation using thickness estimates from NASA's ICESat from 2004 to 2009 show a volume loss of 1,400 cubic kilometers (336 cubic miles), or about 20 percent of the total loss by volume.

How and where multiyear ice is lost has impacts on the Arctic system. For example, more loss by melt means more freshwater remains in local Arctic waters rather than being transported southward.

"These results also show that thick multiyear sea ice is not immune to melt in the Pacific sector of the [Arctic Ocean](#) in today's climate," Kwok said.

The additional freshwater from melt in the Pacific sector, which encompasses the area of study, could contribute to the freshening of the Beaufort Gyre and potentially influence circulation, but the degree of that influence remains uncertain.

Not all of the multiyear [ice loss](#) is accounted for, however. Ice loss through Fram Strait and from melt from 2005 to 2008 accounts for just 52 percent of total ice loss. The team suggests that melt in other Arctic regions and outflow through other passages besides Fram Strait could account for the difference.

More information: www.nasa.gov/topics/earth/feat...cesat-20090707r.html

Provided by JPL/NASA

Citation: Role of melt in arctic sea ice loss found by NASA study (2010, November 10) retrieved 9 April 2024 from <https://phys.org/news/2010-11-role-arctic-sea-ice-loss.html>

This document is subject to copyright. Apart from any fair dealing for the purpose of private study or research, no part may be reproduced without the written permission. The content is provided for information purposes only.