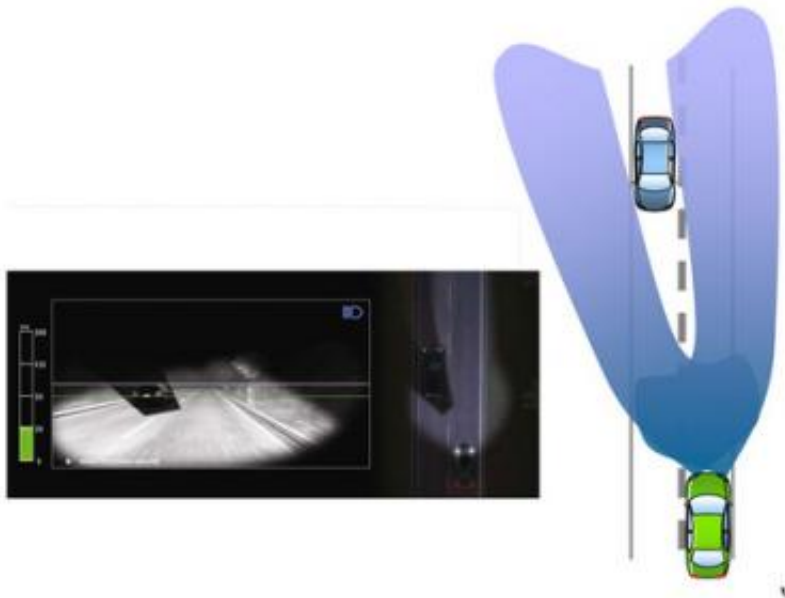


# Adaptive headlamp system introduced

September 2 2010, by Lin Edwards

---



Valeo's BeamAtic Premium system

(PhysOrg.com) -- The independent industrial group Valeo, which is headquartered in France, has introduced a "BeamAtic" adaptive headlight system that enables drivers to keep their lights on high beam without dazzling other drivers.

High beam provides the most efficient lighting for vehicles, but every time another [vehicle](#) approaches or is in front, the lights must be switched to low beam. In the Valeo BeamAtic Premium system, which is also called an "Adaptive Driving Beam," switching between high and low beams is unnecessary because the lighting is automatically adjusted in

response to another vehicle being detected by an onboard camera.

In the high beam position, maximum light is maintained everywhere except in zones occupied by other vehicles either in front or approaching. Each headlamp produces a cone of light, but when a vehicle is detected a mobile shield is brought into position to block off some of the light. The onboard camera is equipped with powerful image processing software that enables it to track the trajectory of the other vehicle and ensure the other driver is not dazzled by the high beam.

Drivers in other vehicles see what appears to be low beam light, while the driver in the car fitted with BeamAtic sees what appears to be normal high [beam light](#), with the road fully illuminated.

The system includes a "Tourism" feature that adapts the lighting for driving in countries in which traffic travels on the opposite side of the road.

Valeo says the new system will improve [driver safety](#) since objects at the sides of the road are more clearly visible. The system won the International Technical Innovation Grand Prix at the international trade show, Equip Auto, in September 2009. The first BeamAtic Premium headlight systems will be available from lamp manufacturer Ichikoh Industries in Japan from this month, and Valeo is negotiating with Japanese car makers for the system to be included in future vehicles.

The Valeo Group is one of the world's top automotive suppliers, producing a range of vehicle components. It has branches in 27 countries and employs 56,000 people.

© 2010 PhysOrg.com

Citation: Adaptive headlamp system introduced (2010, September 2) retrieved 19 April 2024

from <https://phys.org/news/2010-09-headlamp.html>

This document is subject to copyright. Apart from any fair dealing for the purpose of private study or research, no part may be reproduced without the written permission. The content is provided for information purposes only.