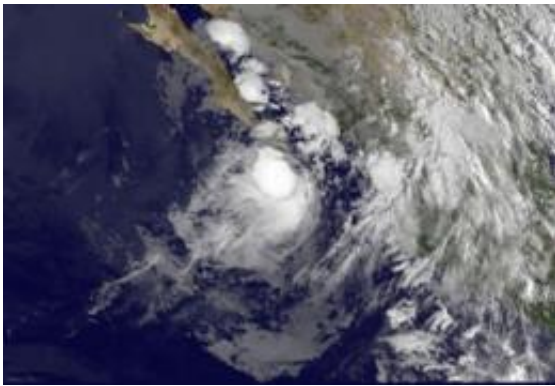


GOES-11 catches quick birth of Tropical Storm Georgette already moving into Baja California

September 21 2010



The GOES-11 satellite captured an infrared image of Tropical Storm Georgette's (left) clouds reaching into Baja California, Mexico at 13:15 UTC 9:15 a.m. EDT on Sept. 21. Credit: NOAA/NASA GOES Project

Tropical Storm Georgette formed pretty quickly and the GOES-11 satellite captured her clouds extending over extreme southern Baja California and western Mexico today. Georgette formed just south of Cabo San Lucas this morning and is headed for a Baja landfall.

The [Geostationary Operational Environmental Satellite](#) or GOES-11 is stationary in its position in space, watching over the weather in the western U.S. GOES-11 captured an infrared image of Tropical Storm Georgette's rounded cloud cover stretching north into Baja California,

Mexico at 13:15 UTC 9:15 a.m. EDT today, Sept. 21. GOES-11 imagery showed a smaller rounded area of clouds near Georgette's center, indicating higher clouds and stronger thunderstorms.

GOES-11 is operated by the National Oceanic and Atmospheric Administration, and images are created by NASA's GOES Project, located at NASA's Goddard Space Flight Center, Greenbelt, Md.

Because Georgette formed close to the coast there are already tropical storm warnings in effect for western Mexico. A tropical storm warning is in effect for the west coast of Baja California from Agua Blanca southward to Cabo San Lucas and the east coast of Baja California from Buenavista southward to Cabo San Lucas. A tropical storm warning means that tropical storm conditions are expected somewhere within the warning area - in this case within the next 12 to 24 hours.

Tropical Storm-force winds will move into Baja California and the warning area later today. Georgette is going to be a big rainmaker. Total rainfall amounts between 4 to 6 inches are expected with isolated amounts to 10 inches.

At 8 a.m. EDT (5 a.m. PDT/local time) [Tropical Storm](#) Georgette had [maximum sustained winds](#) near 40 mph and is expected to weaken once it gets over land in Baja California later today. Georgette is located about 60 miles south-southeast of Cabo San Lucas, Mexico near latitude 22.1 North and longitude 109.5 West longitude. Minimum central pressure is near 1001 millibars.

Georgette is moving north-northwest near 9 mph and is expected to move over the southern Baja later today. Then, Georgette is forecast to move into the Gulf of California tonight or Wednesday and become a remnant low pressure area, quickly dissipating over mainland Mexico.

Provided by NASA's Goddard Space Flight Center

Citation: GOES-11 catches quick birth of Tropical Storm Georgette already moving into Baja California (2010, September 21) retrieved 16 June 2024 from

<https://phys.org/news/2010-09-goes-quick-birth-tropical-storm.html>

This document is subject to copyright. Apart from any fair dealing for the purpose of private study or research, no part may be reproduced without the written permission. The content is provided for information purposes only.