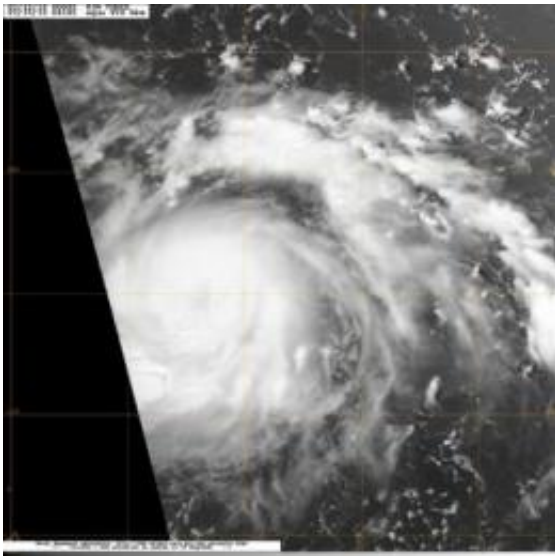


Tropical Storm Conson forms in northwestern Pacific

July 12 2010



NASA's Aqua satellite passed over Tropical Storm Conson on July 12 at 12:14 p.m. (local Asia/Manila time) and showed a well-developed circulation. Credit: NASA/JTWC/NRL

Tropical Storm Conson formed in the northwestern Pacific Ocean over the weekend, and is now poised to bring rainfall and gusty winds to the northern Philippines. NASA's Aqua satellite passed over Conson on July 12 at 12:14 p.m. (local Asia/Manila time) and showed a well-developed circulation.

Conson, known locally in the Philippines as "Tropical Storm Basyang,"

was about 400 nautical miles east of Manila, Philippines, near 14.4 North and 127.1 East at 1500 UTC (11 a.m. EDT). Conson has [maximum sustained winds](#) near 60 knots (69 mph) with higher gusts. Although Tropical Storm Conson is moving west near 14 knots (16 mph) it is forecast to track north-northwest over the next couple of days, and is expected to make landfall on July 13 after 1200 Zulu Time (8 a.m. EDT or 8 p.m. local Asia/Manila time).

The Philippine Atmospheric Geophysical and Astronomical Services Administration known as PAGASA posts forecasts and watches and warnings for residents of the Philippines.

Signal Warnings have been posted by PAGASA for various areas in Luzon, the Philippines. Signal No. 2 has been posted in Luzon for the following areas: Catanduanes, Camarines Norte, Polillo Island, Aurora, Quirino and Isabela. Signal 2 means winds are expected between 60-100 kph (37-62 mph).

A Signal No. 1 alert indicates expected winds between 30-60 kph (18-37 mph). A Signal 1 is in effect in Luzon for the areas of: Camarines Sur, Albay, Quezon, Rizal, Bulacan, Nueva Ecija, Nueva Vizcaya, Ifugao, Benguet, Mt. Province, Kalinga, and Cagayan. Residents living in low lying and mountainous areas under signals # 1 and 2 are alerted against possible flashfloods and landslides. For updated watches and warnings, visit: www.pagasa.dost.gov.ph/wb/tc_up.html.

PAGASA indicated that by Tuesday evening (local Asia/Manila time) the center of Conson (or Basyang) should be located about 90 km (55 miles) east of Casiguran, Aurora and is expected to make landfall before midnight (local time). By Wednesday evening, July 14, Conson's (Basyang) center is expected to be about 120 km (74 miles) west-Southwest of Laoag City.

Microwave satellite imagery on July 12 (today) indicated a low-level eye feature, a sign that [Tropical Storm](#) Conson may be strengthening into a Cyclone. Even though today's visible image captured by the Moderate Resolution Imaging Spectroradiometer (that flies aboard NASA's Aqua satellite) did not show an eye, it was likely because the upper levels of Conson's center were obscured by high clouds.

Forecasters at the Joint Typhoon Warning Center indicate that Conson will continue to strengthen because it is in an area with low vertical wind shear (winds that can tear a storm apart if strong enough) and warm sea surface temperatures (that power cyclones).

Provided by NASA's Goddard Space Flight Center

Citation: Tropical Storm Conson forms in northwestern Pacific (2010, July 12) retrieved 10 May 2024 from <https://phys.org/news/2010-07-tropical-storm-conson-northwestern-pacific.html>

This document is subject to copyright. Apart from any fair dealing for the purpose of private study or research, no part may be reproduced without the written permission. The content is provided for information purposes only.