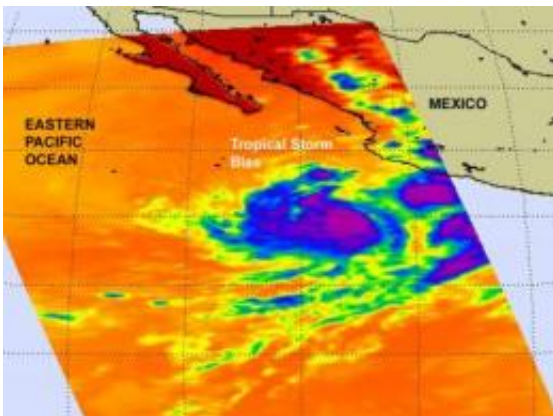


Tropical Storm Blas bearing bouts of strong convection in NASA imagery

June 18 2010



NASA's Aqua satellite captured an infrared image of Tropical Storm Blas on June 17 at 20:41 UTC (4:41 p.m. EDT), and it showed two areas of very high, frigid clouds (purple) in the northeastern and eastern areas of the storm. Credit: NASA JPL, Ed Olsen

Tropical Storm Blas is on a west-northwesterly track in the open waters of the Eastern Pacific Ocean, and a NASA satellite flying overhead noticed some strong areas of convection in the storm.

NASA's Aqua [satellite](#) flew over Tropical Storm Blas on June 17 at 20:41 UTC (4:41 p.m. EDT) and captured an infrared image of the storm from the Atmospheric Infrared Sounder (AIRS) instrument. The AIRS image showed two areas of very high, frigid clouds (as cold as or colder than -63 Fahrenheit) in the northeastern and eastern areas of the

storm. That strong convection shifted overnight to the southeastern region of the storm.

At 09:00 UTC (5 a.m. EDT), Blas was located about 270 miles (440 kilometers) southwest of Manzanillo, Mexico near 15.8 North and 106.7 West. It was moving west-northwest near 5 mph (4 knots). Blas' [maximum sustained winds](#) are near 40 mph (35 knots), and its estimated minimum central pressure is near 1000 millibars. [Tropical storm](#) force winds extend outward up to 70 miles (110 km) mainly to the southeast of the center.

The National Hurricane Center noted in their discussion on the morning of June 18, "Numerous [areas of] strong convection appears within 90 nautical miles of center over the southern semicircle. Scattered moderate/isolated strong convection is within 30 nm of a line from 16 North and 107 West to 17 North and 110 West."

During the overnight hours from June 17 to June 18, Blas convection (rapidly rising air that condenses and forms clouds and thunderstorms) has weakened. By the early morning hours of June 18, the convection in the storm had deepened quickly.

Over the weekend of June 19 and 20, Blas is forecast to change very little in strength while continuing to track to the west-northwest in open waters of the Eastern Pacific Ocean.

Provided by NASA's Goddard Space Flight Center

Citation: Tropical Storm Blas bearing bouts of strong convection in NASA imagery (2010, June 18) retrieved 19 April 2024 from <https://phys.org/news/2010-06-tropical-storm-blas-bouts-strong.html>

This document is subject to copyright. Apart from any fair dealing for the purpose of private study or research, no part may be reproduced without the written permission. The content is provided for information purposes only.