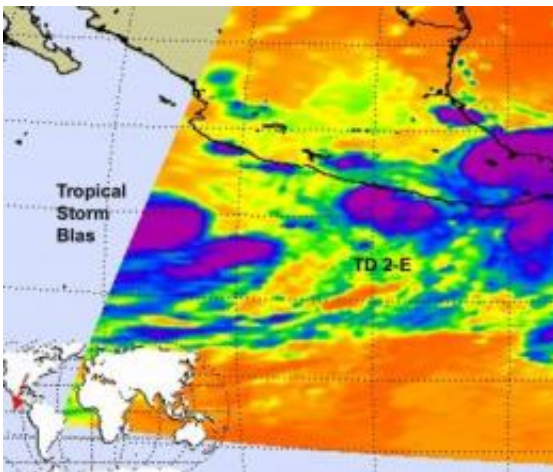


Tropical Depression 2-E struggling, while Tropical Storm Blas is born

June 17 2010



NASA's Aqua satellite captured an infrared image of TD2-E hugging the coast of western Mexico (small rounded area, center) and the western half of Tropical Storm Blas that appears as a half circle (left). Both have high, strong thunderstorms in their center (purple). Credit: NASA JPL, Ed Olsen

NASA infrared satellite imagery captured two tropical depressions in the Eastern Pacific Ocean today, as one struggles to survive and the other powered up into Tropical Storm Blas.

On June 17 at 08:11 UTC (4:11 a.m. EDT/1:11 PDT) the Atmospheric Infrared Sounder (AIRS) instrument that flies aboard NASA's Aqua satellite captured an [infrared image](#) of Tropical Depression 2-E (TD2-E) hugging the coast of western Mexico and the western half of Tropical

Storm Blas which is farther west and in open waters. Both have high, strong thunderstorms in their center. The AIRS image indicates strong convection, with cloud top temperatures as cold or colder than -63 Fahrenheit.

Tropical Depression 2-E in the Eastern Pacific is close to land and although it is having difficulty strengthening it is still bringing a lot of rain to the western Mexican coast to the states of Oaxaca and southern Guerrero. At 5 a.m. PDT (8 a.m. EDT) TD2-E still had [maximum sustained winds](#) near 30 mph, as it did 24 hours before. It was located near 15.6 North and 98.0 West, about 60 miles (100 km) west-southwest of Puerto Escondido, Mexico, or 65 miles (105 km) southeast of Punto Maldonado, Mexico. TD2-E is moving at 9 mph (15 km/hr) toward the west-northwest, and has a minimum central pressure of 1008 millibars.

Heavy rainfall is the main threat from this system. A tropical storm warning is in effect for Salina Cruz to Acapulco, Mexico and a tropical storm watch is in effect for areas west of Acapulco to Zihuatanejo. TD2-E is expected to continue moving north-northwest along the coast for the next day or two, continuing its rainy assault over land.

TD2-E is expected to produce total rain accumulations of 4 to 8 inches along the coast of the state of Oaxaca and southern Guerrero, with possible isolated maximum amounts of 12 inches. These rains could produce life-threatening flash floods and mudslides.

At 11 a.m. EDT (8 a.m. PDT) on June 17, the third tropical depression of the Eastern Pacific Hurricane Season was born. By 11:40 a.m. EDT (8:40 a.m. PDT) [Tropical Depression](#) 3-E (TD3-E) had strengthened into Tropical Storm Blas with maximum sustained winds near 40 mph and is expected to strengthen more over the next 48 hours. It is currently located about 265 miles (425 km) south-southwest of Manzanillo, Mexico, near 15.3 North latitude and 105.3 West longitude. It is moving

northeast near 2 mph (4 km/hr) and is expected to turn to the west-northwest. Estimated minimum central pressure is 1006 millibars. There are no coastal warnings in effect for this [tropical storm](#).

Provided by NASA's Goddard Space Flight Center

Citation: Tropical Depression 2-E struggling, while Tropical Storm Blas is born (2010, June 17) retrieved 24 April 2024 from

<https://phys.org/news/2010-06-tropical-depression-e-struggling-storm.html>

This document is subject to copyright. Apart from any fair dealing for the purpose of private study or research, no part may be reproduced without the written permission. The content is provided for information purposes only.