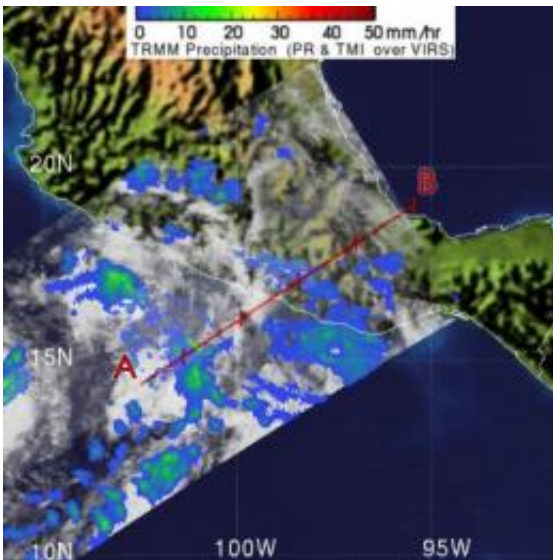


# NASA's TRMM Satellite sees Tropical Depression 2-E dissipating

June 18 2010



The Tropical Rainfall Measuring Mission's (TRMM) satellite image of Tropical Depression 2-E on June 17 at 19:59 UTC (3:59 p.m. EDT) showed that moderate rainfall (green) was occurring over the ocean, off the western Mexican coast. TRMM showed that light rain (blue) was falling over Oaxaca at that time. Credit: NASA, Hal Pierce

The National Hurricane Center issued the final advisory on the Eastern Pacific Ocean's second tropical depression (2-E) on June 17 at 11 a.m. EDT. NASA satellite imagery from mid-afternoon that day revealed the depression's rains were waning, and the heaviest rainfall was over open ocean. As of June 18 Tropical Depression 2-E had dissipated off the coast.

The Tropical Rainfall Measuring Mission satellite known as TRMM measures rainfall from space. TRMM is a joint mission between NASA and the Japanese Space Agency and is a critical tool for forecasters of [tropical cyclones](#) because it can tell the rate of rainfall in a storm, acting as a "rain gauge from space." TRMM's [satellite](#) image of [Tropical Depression 2-E](#) (TD2-E) on June 17 at 19:59 UTC (3:59 p.m. EDT) showed that moderate [rainfall](#) was occurring over the ocean, off the western Mexican coast. TRMM showed that light rain was falling over Oaxaca at that time.

On June 18 at 9 a.m. EDT, weather stations in Oaxaca were reporting overcast conditions (at 10,000 feet), light drizzle, and a light wind of 2 mph from the northwest. Acapulco, located to the north-northwest of Oaxaca is just reporting overcast skies with calm winds.

The last official position of Tropical Depression 2-E at 11 a.m. EDT was 35 miles south of Punto Maldonado, Mexico, near 15.8 North and 98.6 West. At that time, TD2-E still had maximum sustained winds near 30 mph, and a minimum central pressure of 1008 millibars.

The government of Mexico discontinued all tropical storm watches and warnings by mid-day on June 17.

Provided by NASA's Goddard Space Flight Center

Citation: NASA's TRMM Satellite sees Tropical Depression 2-E dissipating (2010, June 18) retrieved 25 April 2024 from

<https://phys.org/news/2010-06-nasa-trmm-satellite-tropical-depression.html>

This document is subject to copyright. Apart from any fair dealing for the purpose of private study or research, no part may be reproduced without the written permission. The content is provided for information purposes only.