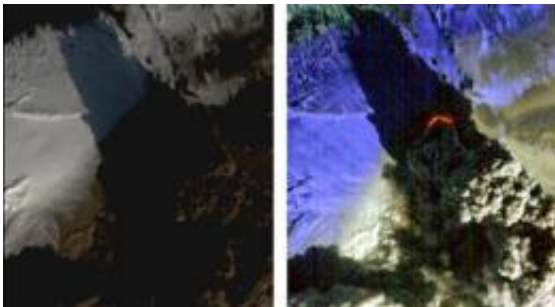


# NASA Satellite Eyes Iceland Volcano Cauldron

April 19 2010

---



Visible (left) and infrared (right) images of Iceland's Eyjafjallajökull volcano, acquired April 17, 2010, from the Hyperion instrument onboard NASA's Earth Observing-1 (EO-1) spacecraft. Image credit: NASA/JPL/EO-1 Mission/GSFC/Ashley Davies

(PhysOrg.com) -- On Saturday, April 17, 2010, the Hyperion instrument onboard NASA's Earth Observing-1 (EO-1) spacecraft obtained this pair of images of the continuing eruption of Iceland's Eyjafjallajökull volcano.

In the left-hand image, created from [visible wavelengths](#), new black ash deposits are visible on the ground, as well as nearby brilliant unsullied ice and snow and the volcano's brown, billowing plume. The plume's dark color reflects its large ash content. These fine particles of pulverized rock are carried high into the atmosphere, where they create a hazard for aviation and are carried long distances by the prevailing

winds.

In contrast, the false-color, [infrared image](#) at the right reveals the intense thermal emissions (at least 60 megawatts, or 60 million watts) emanating from the vent at the base of the massive plume. This [thermal emission](#), equivalent to the [energy consumption](#) of 60,000 homes, represents only a small proportion of the total energy being released by the volcano as its [molten lava](#) interacts violently with ice and water. Each image covers an area measuring 7.7 kilometers (4.8 miles) wide, and has a resolution of 30 meters (98 feet) per pixel. The vertical direction is north-northeast.

The EO-1 spacecraft is managed by NASA's Goddard Space Flight Center, Greenbelt, Md. EO-1 is the satellite remote-sensing asset used by the Volcano Sensor Web developed by NASA's Jet Propulsion Laboratory, Pasadena, Calif., which is being used to monitor this, and other, volcanic eruptions around the world.

Provided by JPL/NASA

Citation: NASA Satellite Eyes Iceland Volcano Cauldron (2010, April 19) retrieved 19 April 2024 from <https://phys.org/news/2010-04-nasa-satellite-eyes-iceland-volcano.html>

<p>This document is subject to copyright. Apart from any fair dealing for the purpose of private study or research, no part may be reproduced without the written permission. The content is provided for information purposes only.</p>
--