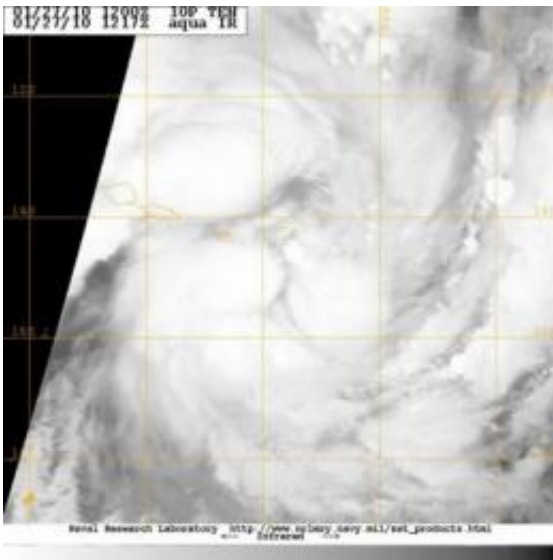


# NASA satellite sees Tropical Depression 10P Strengthening in south Pacific

January 27 2010

---



NASA's Moderate Resolution Imaging Spectroradiometer (MODIS) instrument captured an infrared image of Tropical Depression 10P on Jan. 27 at 12:17 UTC. Credit: NASA/JWTC

NASA's Aqua satellite is keeping an eye on the tenth tropical depression to form in the southern Pacific Ocean. Tropical Depression 10P has formed overnight and is expected to continue strengthening.

When Aqua passed over [Tropical Depression](#) 10P (TD 10P) on January 27 at 12:17 UTC (7:17 a.m. ET) it was located near 15.1 South and 169.7 W, had [maximum sustained winds](#) near 39 mph (35 knots) and a

minimum central pressure of 996 millibars. That places TD 10P's center about 45 nautical miles west-southwest of Pago Pago, American Samoa.

American Samoa is an unincorporated territory of the United States, located in the South [Pacific Ocean](#), southeast of the sovereign state of Samoa.

TD 10P is moving east-southeast at a speedy 20 mph (18 knots). The Moderate Resolution Imaging Spectroradiometer (MODIS) instrument on NASA's Aqua satellite took an infrared image of TD 10P earlier today, January 27, revealing the depression was strengthening quickly. Ground observations from the Ta'u Airport at American Samoa agreed with the 35 maximum sustained wind-speed [satellite](#) estimate. Ground observations noted that air pressure has dropped over the last day, to 997.5 millibars, which also indicates a strengthening storm.

Because of low [wind shear](#) and warm sea surface temperatures, TD 10P is expected to continue to strengthen.

Over the next several days, TD 10P is forecast to move generally in an easterly direction, and is expected to bring rains and gusty winds to Barotonga, Bora Bora and Tahiti.

Provided by NASA's Goddard Space Flight Center

Citation: NASA satellite sees Tropical Depression 10P Strengthening in south Pacific (2010, January 27) retrieved 11 May 2024 from <https://phys.org/news/2010-01-nasa-satellite-tropical-depression-10p.html>

This document is subject to copyright. Apart from any fair dealing for the purpose of private study or research, no part may be reproduced without the written permission. The content is provided for information purposes only.