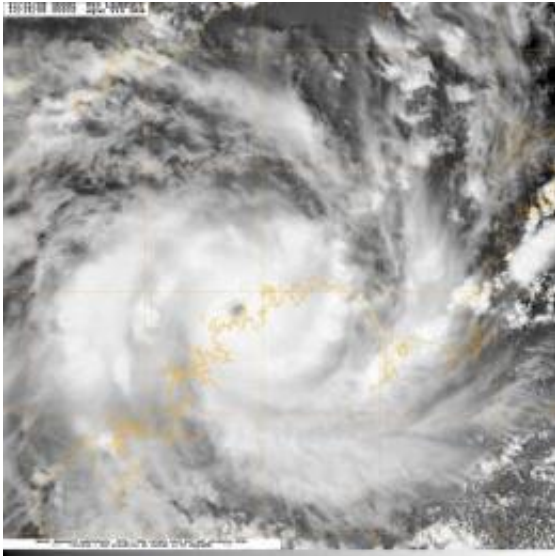


Laurence made landfall in Western Australia

December 15 2009



The Moderate Resolution Imaging Spectroradiometer Instrument on NASA's Aqua satellite captured an infrared image of Cyclone Laurence on Dec. 15 at 12:03 a.m. ET as its eye was about to make landfall. Credit: NASA/JTWC

Tropical Cyclone Laurence made landfall in Northwestern Australia this morning (Eastern Time) December 15, 2009. NASA's Aqua satellite captured a visible image of Laurence just before the center of the storm made landfall at 0503 UTC (12:03 a.m. ET). The Moderate Resolution Image Spectroradiometer instrument on Aqua captured the image.

At 06:00 UTC (1 a.m. ET) Laurence's center was located near 14.6 South and 125.4 East. Its center was just northeast of Derby, which is located on the coast in the Western Australia territory. Despite it's

proximity to the coast, Laurence's winds were near 86 mph, making it a Category One Cyclone. It was moving to the southwest near 7 mph.

Observations from Troughton Island indicated sustained winds as high as 85 mph (74 knots) as Laurence passed 12 hours before.

Laurence is now expected to track deeper into interior Australia and dissipate in the next two days.

Provided by NASA/Goddard Space Flight Center

Citation: Laurence made landfall in Western Australia (2009, December 15) retrieved 10 April 2024 from <https://phys.org/news/2009-12-laurence-landfall-western-australia.html>

This document is subject to copyright. Apart from any fair dealing for the purpose of private study or research, no part may be reproduced without the written permission. The content is provided for information purposes only.