

Satellites see Typhoon Lupit now bringing more rains to soggy Philippines

October 22 2009



NASA's MODIS instrument on the Terra satellite captured Typhoon Lupit on Oct. 22 at 0240 UTC (10:40 a.m. local time Asia/Manila), and it didn't show an eye, indicating the storm may be weakening as it runs into dry air. Credit: NASA MODIS Rapid Response Team

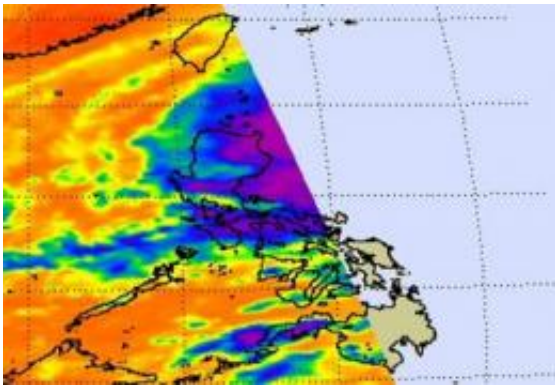
Typhoon Lupit (called Ramil in the Philippines) is already raining over the northern Luzon today, October 22. The storm has unfortunately slowed to 8 mph as it creeps westward, and that's bad news for flood-weary residents, as it means more rainfall for that region.

Tropical cyclones Ketsana and Parma caused flooding, devastation and

death in the Philippines over the last 30 days, leaving dams overflowing and drenched soils unable to soak up any more rain. Those storms combined were responsible for more than 1,000 deaths in Manila and other parts of Luzon.

At 11:30 a.m. EDT on October 22, (11:30 p.m. Asia/Manila local time) the cities already experiencing rainfall in northern Luzon include Aparri, Calayan, Tuguegarao City, and south as far as Daet, as Lupit moves closer.

Lupit is a Category One Typhoon, with maximum sustained winds near 74 mph. Its center is located 300 nautical miles north-northeast of Manila, the Philippines, but because the storm is so large, its rains are already being felt in the northeast cities of Luzon. Lupit's center was near 18.9 North and 123.5 East. Lupit is moving west near 8 mph, and generating strong surf and seas as high as 32 feet.



The western side of Typhoon Lupit is visible in this satellite image from NASA Aqua's AIRS instrument. Aqua's track took it to the west of the storm on Oct. 22 at 5:41 UTC (1:41 p.m. Asia/Manila Time). Lupit's high thunderstorm cloud temperatures (in purple) were still strong and colder than minus 63F. Credit: NASA JPL, Ed Olsen

Philippine warnings that remain in effect include: Public Storm Warning Signal 3 is in force in the following areas of Luzon: Batanes Group of Islands, Cagayan, Calayan Island, Babuyan Islands, Apayao, Ilocos Norte. Public Storm Warning Signal 2 is in force in the following areas of Luzon: Kalinga, Isabela, Ilocos Sur, Abra, Mt Province, Ifugao, Benguet, La Union, Nueva Vizcaya, Quirino and Aurora. Public Storm Warning Signal 1 is in force in the following areas of Luzon: Pangasinan, Bulacan, Pampanga, Northern Quezon, Polillo Islands, Nueva Ecija, Tarlac and Zambales.

NASA's Aqua satellite again flew just to the west of Typhoon Lupit early this morning Oct. 22 at 5:41 UTC (1:41 p.m. Asia/Manila Time or 1:41 a.m. EDT). Aqua's Atmospheric Infrared Sounder (AIRS) instrument captured the western edge of Lupit, the area of the storm that was already raining on northeast Luzon. The infrared imagery showed that there are still some high thunderstorms, and that means some heavy rainfall coming to the region. Cloud top temperatures were colder than minus 63 Fahrenheit indicating strong thunderstorms in the cyclone.

NASA's Terra satellite passed over Lupit and captured an image of the large storm using the Moderate Imaging Spectroradiometer (MODIS) instrument on October 22 at 0240 UTC (10:40 a.m. local time Asia/Manila) approaching the northern Philippines. The image of Lupit's clouds didn't show an eye, indicating that the [storm](#) may be weakening. Dry air crossing over Luzon is beginning to wrap toward Lupit's center, interfering with deep convection and thunderstorm development, weakening the typhoon. The dry air can't move in quickly enough for residents of Luzon, as the rain is already falling today.

The U.S. Navy's Joint [Typhoon](#) Warning Center has amended the forecast track for Lupit, now keeping the center of circulation at sea and passing just northeast of Luzon over the next day or two before curving northwest.

Source: NASA/Goddard Space Flight Center

Citation: Satellites see Typhoon Lupit now bringing more rains to soggy Philippines (2009, October 22) retrieved 25 April 2024 from <https://phys.org/news/2009-10-satellites-typhoon-lupit-soggy-philippines.html>

This document is subject to copyright. Apart from any fair dealing for the purpose of private study or research, no part may be reproduced without the written permission. The content is provided for information purposes only.