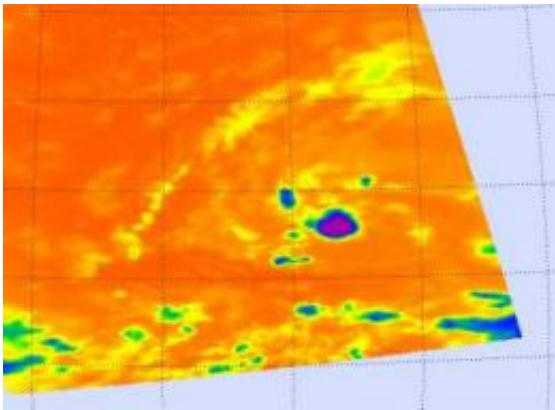


Tropical depression 2 on shaky ground, 3 other areas to watch on weekend

August 14 2009



The Atmospheric Infrared Sounder instrument on NASA's Aqua satellite captured an image of Tropical Depression 2's cloud temperatures on August 13 at 2:17 p.m. EDT. Purple indicates coldest and highest thunderstorms, blue is the second coldest. AIRS noticed there are no very powerful thunderstorms associated with this storm. Credit: NASA JPL, Ed Olsen

The Atlantic Ocean's second Tropical Depression has been on shaky ground since it formed early in the week of August 11. It meandered westward from the African coast and maintained its tropical depression status until weakening to a remnant low. Now it has the potential to come back. In addition to Tropical Depression 2, there are three other areas forecasters are watching in the Atlantic Basin. Residents of Florida should particularly be watchful as there's a potential for tropical development on both the east and west coasts this weekend.

At 5 p.m. EDT on Aug. 13, Tropical Depression 2 (TD2) in the Atlantic Ocean was downgraded to a remnant low [pressure](#) area. If you're a tropical cyclone, you can't get any lower than that, aside from total dissipation. At that time, TD2's remnants were about 930 miles west of the southernmost Cape Verde Islands off the African coast.

The Atmospheric Infrared Sounder (AIRS) instrument on NASA's Aqua satellite measures cloud top [temperature](#) and pressure, and it captured a look at the remnants of [Tropical Depression 2](#), and it was still maintaining somewhat of a circular shape. In infrared imagery, NASA's false-colored purple clouds are as cold as or colder than 220 Kelvin or minus 63 degrees Fahrenheit (F). The blue colored clouds are about 240 [Kelvin](#), or minus 27F. The colder the clouds are, the higher they are, and the more powerful the thunderstorms are that make up the cyclone.

In addition to TD2's struggle for life, there other three areas forecasters will be watching over the weekend and residents of Florida should keep an eye on both coasts for tropical development of two of the three systems.

Farthest from the U.S. is the area of showers and thunderstorms with the greatest potential for developing into a tropical cyclone over the weekend. On Aug. 14, that area of disturbed weather was located 250 miles west-southwest of the southern Cape Verde Islands. It has a "greater than 50 percent chance of developing."

Much closer to the U.S. are two areas with less than a 30 percent chance of development. One area of showers and thunderstorms are associated with a tropical wave that stretches from the Bahamas to Hispaniola. The other area is in the Gulf of Mexico, associated with a weak elongated area of low pressure. The area is centered off the coast from Tampa, Florida. Residents of Florida should be on watch this weekend, as tropical development is possible around them on both the east and west

coasts. For the latest updates, visit: www.nhc.noaa.gov.

Source: NASA/Goddard Space Flight Center

Citation: Tropical depression 2 on shaky ground, 3 other areas to watch on weekend (2009, August 14) retrieved 27 April 2024 from <https://phys.org/news/2009-08-tropical-depression-shaky-ground-areas.html>

This document is subject to copyright. Apart from any fair dealing for the purpose of private study or research, no part may be reproduced without the written permission. The content is provided for information purposes only.