

Phoenix Digs Deeper Trench

June 16 2008

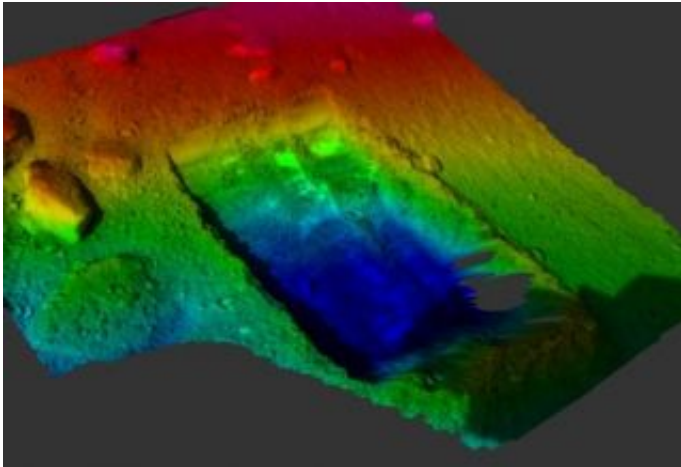


Image credit: NASA/JPL-Caltech/University of Arizona/Texas A&M University/NASA Ames Research Center

This color-coded elevation map shows the "Dodo-Goldilocks" trench dug by the Robotic Arm on NASA's Phoenix Mars Lander.

This color-coded elevation map shows the "Dodo-Goldilocks" trench dug by the Robotic Arm on NASA's Phoenix Mars Lander. The trench, originally two separate trenches nicknamed "Dodo" (left) and "Goldilocks" (right), became one after further digging on the 19th Martian day, or Sol 18, of the mission (June 12, 2008).

The trench is 7 to 8 centimeters (2.7 to 3 inches) at its deepest (blue). Because the terrain itself is inclined at a 14-degree angle, the highest areas (pink) are about 20 centimeters (7.8 inches) above the lowest

areas.

The trench is 22 centimeters (8.7 inches) wide and 35 centimeters (13.8 inches) long. Its deepest portion is closest to the lander.

This picture was taken by Phoenix's Surface Stereo Imager on Sol 19 (June 13, 2008).

The Phoenix Mission is led by the University of Arizona, Tucson, on behalf of NASA. Project management of the mission is by NASA's Jet Propulsion Laboratory, Pasadena, Calif. Spacecraft development is by Lockheed Martin Space Systems, Denver.

Source: NASA

Citation: Phoenix Digs Deeper Trench (2008, June 16) retrieved 8 April 2024 from <https://phys.org/news/2008-06-phoenix-deeper-trench.html>

<p>This document is subject to copyright. Apart from any fair dealing for the purpose of private study or research, no part may be reproduced without the written permission. The content is provided for information purposes only.</p>
--