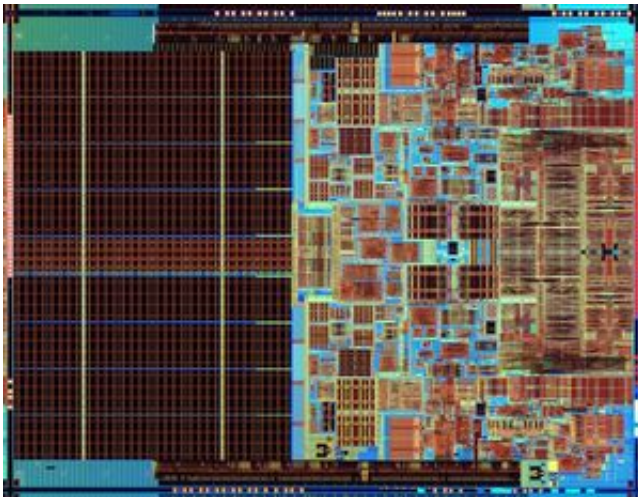


Intel Ships First-Ever Extreme Edition Mobile Processor; Adds New Desktop Chip

July 17 2007



Intel Core 2 Extreme mobile processor die. Credit: Intel

Intel today introduced its first Core2 Extreme mobile dual-core processor -- the world's highest-performing mobile processor -- adopting the brand from the company's flagship desktop offerings. The company also introduced new desktop processors and said it expects to announce battery-friendly quad-core processors for laptop computers next year.

The new products come on the heels of the company's 1-year anniversary of introducing server, desktop and laptop processors based on the innovative Intel Core microarchitecture.

"Laptops are the fastest-growing computing market segment, and there is increasing demand from those who crave the ultimate in video, gaming and design computing performance yet want the freedom and flexibility that a laptop brings," said Mooly Eden, Intel vice president and general manager, Mobile Platforms Group.

"Due to our innovative technology and design capabilities, we can offer world-class, power-smart performance for the most demanding mobile users, and are proud to offer it under our Intel Core 2 Extreme brand -- a name that has become synonymous with ultimate performance."

The Intel Core 2 Extreme X7800 mobile dual-core processor, with both cores running at a brisk 2.6 GHz, also features mobile-specific power-saving features that help Intel's computer-maker customers deliver more energy-efficient and higher-performing designs.

For example, the Intel Core 2 Extreme mobile processor X7800 offers up to 28 percent more performance than our previous-generation mobile processor. In addition, for experienced enthusiasts who desire more capability, the Intel Core 2 Extreme mobile processor bus ratio locks (overspeed protection) have been removed. This offers added technical flexibility in customizing the system so OEMs can unleash even more performance.

For desktop PCs, Intel is announcing a robust set of new processors, including the flagship Intel Core2 Extreme QX6850 quad-core processor. Clocked at 3.0 GHz with a new, faster 1333 MHz system bus speed, the Intel Core 2 Extreme QX6850 will be welcomed by game developers looking to deliver new features and performance levels. Intel also announced new Intel Core 2 Duo and Core 2 Quad processors.

"Thanks to the Intel Core 2 Extreme quad core processor, the PC version of Tom Clancy's Ghost Recon Advanced Warfighter 2 raises gaming to

new heights," said Bo Anderson, CEO, GRIN Development Studio. "Developed by GRIN and published by Ubisoft, the game draws upon the power of Intel's next-generation multi-threaded engine to provide amazingly realistic gameplay. Intel's quad-core processor uses one core for physics, one for rendering, one for game logic and one for miscellaneous tasks, which can provide consistently higher and more stable frame rates."

The Intel Core 2 Extreme X7800 mobile processor, running at 2.6 GHz with 4 MB of L2 cache, is available to OEMs now at a cost of \$851. Notebook systems will appear on the market within the next two weeks. The new Intel desktop processors are also shipping to OEMs now, with product available to end users within the next two weeks.

Source: Intel

Citation: Intel Ships First-Ever Extreme Edition Mobile Processor; Adds New Desktop Chip (2007, July 17) retrieved 10 April 2024 from <https://phys.org/news/2007-07-intel-ships-first-ever-extreme-mobile.html>

<p>This document is subject to copyright. Apart from any fair dealing for the purpose of private study or research, no part may be reproduced without the written permission. The content is provided for information purposes only.</p>
