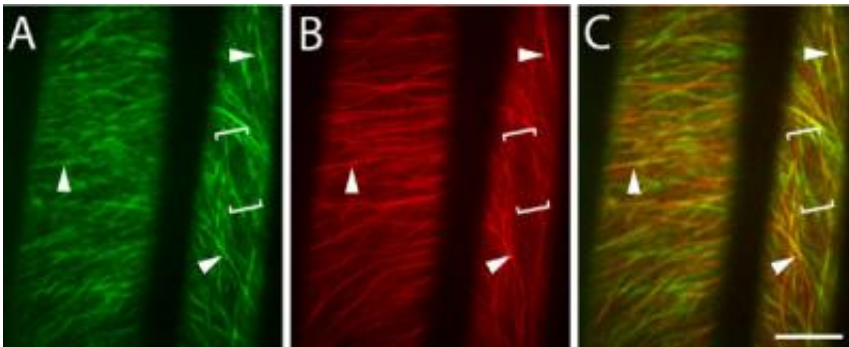


# Formation of cellulose fibers tracked for the first time

April 20 2006



Molecules of cellulose synthase, the enzyme that produces cellulose, follow microtubule “tracks” in growing plant cells. Each image in this set consists of 30 frames, taken at 10 second intervals, laid on top of one another to track the motion of fluorescent molecules. Cellulose synthase (green, panel A) and tubulin, the protein that makes up microtubules (red, panel B), are highly correlated, especially in the areas marked with arrows. Very little of either molecule is found inside the area marked with brackets. The third image (panel C) shows both panels superimposed on each other. (Image used with permission of the American Association for the Advancement of Science, Science Express, April 20, 2006 online issue)

Cellulose--a fibrous molecule found in all plants--is the most abundant biological material on Earth. It is also a favored target of renewable, plant-based biofuels research. Despite overwhelming interest, scientists know relatively little about how plant cells synthesize individual cellulose fibers.

However, recent work from the Carnegie Institution's Department of Plant Biology and Stanford University describes the first real-time observations of cellulose fiber formation. The research, published in the April 20 online issue of *Science Express*, provides the first clear evidence for a functional connection between synthesis of the cell wall and an array of protein fibers--called microtubules--that help to shape growing plant cells from the inside.

"The more we understand about cellulose, the easier it will be to modify it," said Chris Somerville, director of the Carnegie department. "With this knowledge, we are one step closer to designing energy-rich biofuel crops and improved fiber crops."

Cellulose fibers make up a significant portion of the dry weight of most plants. Because the fibers can be broken down into the sugar glucose, which can then be converted into ethanol and other biofuels, there are huge incentives to learn more about how plants produce and modify the molecule. Cellulose is also the main constituent of cotton, paper, wood, and animal feeds such as hay.

Somerville, along with colleague David Ehrhardt and Stanford graduate student Alex Paredez, engineered plants to produce a fluorescent version of cellulose synthase, the enzyme that creates cellulose fibers. They also included a fluorescent version of tubulin, the protein from which microtubules are built. Using an imaging technique that can track the motion of single fluorescent molecules, the researchers found that cellulose synthase moves along "tracks" defined by the microtubules. When the microtubule tracks were disrupted with specific drugs, the cellulose synthase molecules kept moving, but they followed different, less directed patterns.

"Many scientists had suspected a relationship between cellulose synthase and microtubules, but the exact nature of the interaction was hard to

pinpoint," Ehrhardt said. "The microtubules act as more than a general scaffold for organizing the cell wall; individual elements of the microtubule array appear to actively direct the pattern of the cellulose fibers. This work should set a long-standing discussion to rest."

Source: Carnegie Institution

Citation: Formation of cellulose fibers tracked for the first time (2006, April 20) retrieved 25 April 2024 from <https://phys.org/news/2006-04-formation-cellulose-fibers-tracked.html>

This document is subject to copyright. Apart from any fair dealing for the purpose of private study or research, no part may be reproduced without the written permission. The content is provided for information purposes only.