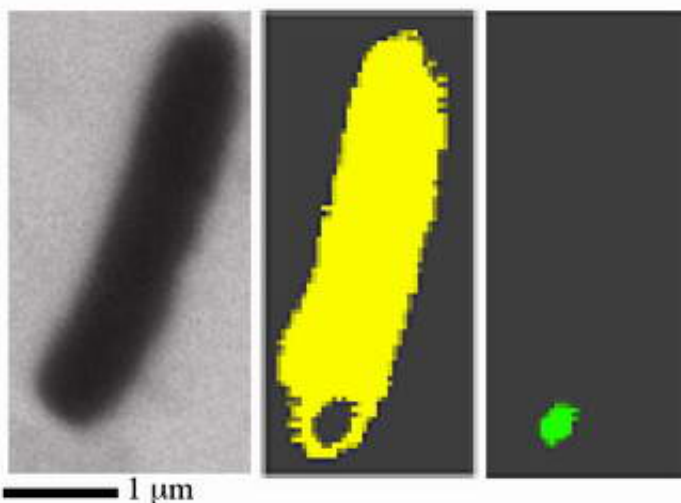


Scientists Describe New Way to Peer Inside Bacteria

August 29 2005



X-rays yield pictures and chemical clues that may help trace contaminants, thwart terrorists

As part of the search for better ways to track and clean up soil contaminants, scientists at the U.S. Department of Energy's Brookhaven National Laboratory and Stony Brook University have developed a new way to "image" the internal chemistry of bacteria. The technique will allow scientists to "see" at the molecular level how soil-dwelling microbes interact with various pollutants. The method might also help scientists better understand and prevent bacterial diseases, or find ways

to detect or disable bacteria used in a terror attack.

Image: This figure shows a single cell of Clostridium sp. (a strictly-anaerobic, soil-dwelling bacterium) as imaged by scanning transmission x-ray spectromicroscopy (left). By analyzing the x-ray absorption spectrum, scientists can pick up subtle biochemical differences between the bulk of the cell body (yellow) and a tiny spore (green) forming inside. This early stage of spore formation would be invisible to other imaging techniques.

"The more we learn about soil microbe chemistry, the better we'll be able to predict the movement of contaminants in the environment," said Brookhaven microbiologist Jeffrey Gillow. "What we learn might also suggest new ways to harness microorganisms to immobilize things like heavy metals and radioactive contaminants," he said. Gillow will give a talk on the new method at the 230th national meeting of the American Chemical Society in Washington, D.C. on Monday, August 29, 2005 at 11:10 a.m. in room 204C of the Washington Convention Center.

Called x-ray spectromicroscopy, the method uses the extremely bright x-rays available at Brookhaven's National Synchrotron Light Source (NSLS) -- but not just to take pictures. At the NSLS, the scientists can actually "tune" the energy level of the beam to measure subtle differences in the energy absorbed by different forms of carbon. This carbon absorption spectrum, or "fingerprint," reveals detailed biochemical information about what is inside and around the bacterial cells -- and can even detect the formation of bacterial spores at an early stage invisible to other methods.

"We are starting to learn a lot more about the molecular chemistry of these bacteria," said Gillow. "The goal is to understand better how they interact with metals and radionuclides."

The technique may also reveal details about the process of bacterial

spore formation. This could be important to environmental cleanup because spore-forming microbes often live in contaminated environments. It might also offer new targets for the detection of weaponized bacteria (by finding spores at an early stage), or help thwart disease or a terrorist attack by finding ways to prevent the spores from germinating into active, infective bacterial cells.

With this technique, Gillow added, samples can be studied wet or dry, without staining, sectioning, or any other intervention such as those used in electron and fluorescence microscopy.

This work is a collaborative effort of the Center for Environmental Molecular Science -- which consists of scientists from Stony Brook University and Brookhaven Lab -- and the University of Guelph in Canada. Drawing on the expertise of microbiologists, chemists, and physicists, it crosses traditional boundaries between scientific disciplines to address problems of global significance. The work was funded by the U.S. National Science Foundation and the Office of Biological and Environmental Research within the U.S. Department of Energy's Office of Science.

Source: Brookhaven National Laboratory

Citation: Scientists Describe New Way to Peer Inside Bacteria (2005, August 29) retrieved 18 April 2024 from <https://phys.org/news/2005-08-scientists-peer-bacteria.html>

This document is subject to copyright. Apart from any fair dealing for the purpose of private study or research, no part may be reproduced without the written permission. The content is provided for information purposes only.