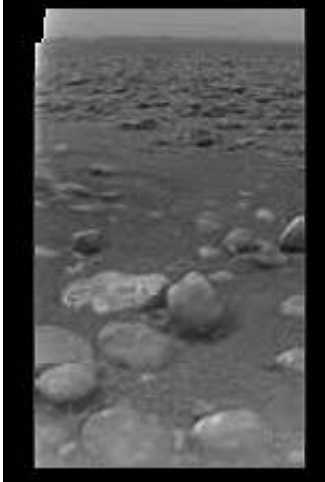


# First images from Titan

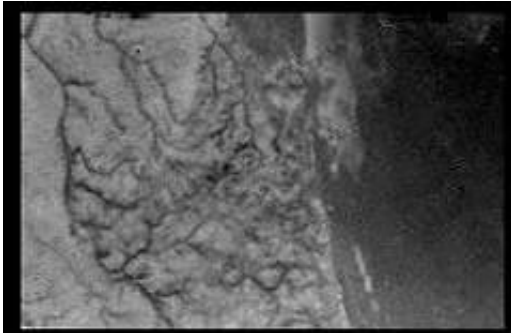
January 14 2005

---



This raw image was returned by the ESA Huygens DISR camera after the probe descended through the atmosphere of Titan. It shows the surface of Titan with ice blocks strewn around. The size and distance of the blocks will be determined when the image is properly processed.

This is one of the first raw images returned by the ESA Huygens probe during its successful descent. It was taken from an altitude of 16.2 kilometres with a resolution of approximately 40 metres per pixel. It apparently shows short, stubby drainage channels leading to a shoreline.



Citation: First images from Titan (2005, January 14) retrieved 26 April 2024 from <https://phys.org/news/2005-01-images-titan.html>

This document is subject to copyright. Apart from any fair dealing for the purpose of private study or research, no part may be reproduced without the written permission. The content is provided for information purposes only.