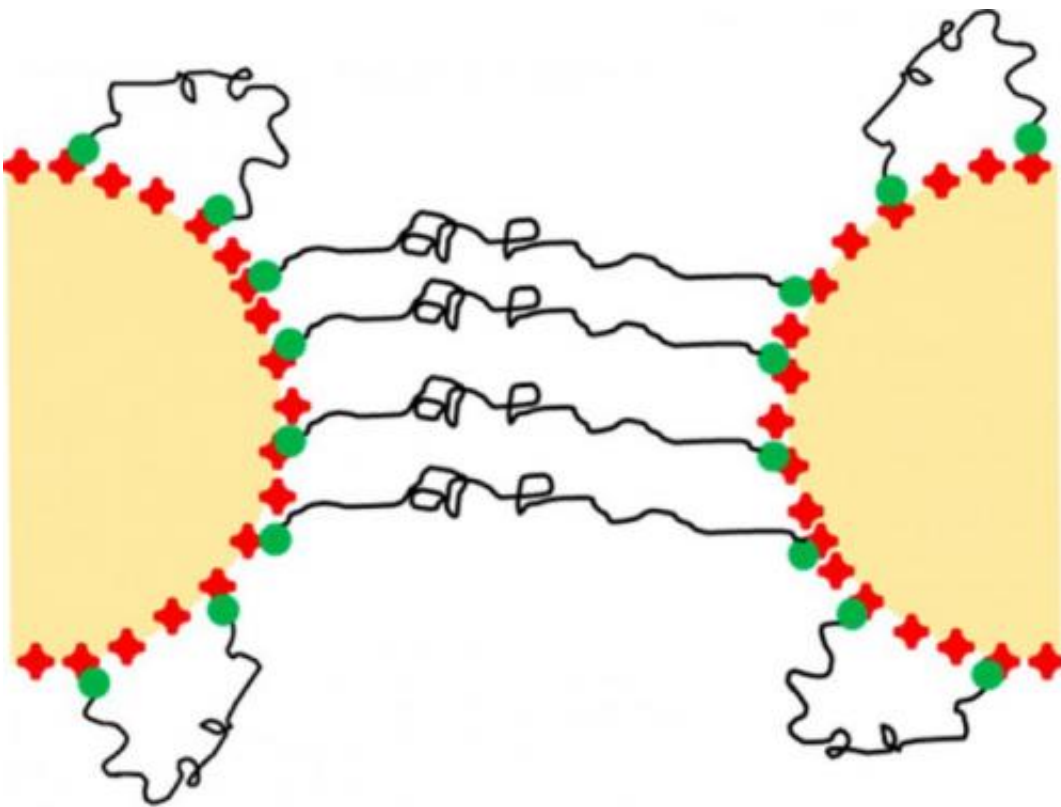


Seeing is bead-lieving: Scientists create model 'bead-spring' chains with tunable properties

July 28 2014



DNA linkers serve as bridges between colloidal beads in a new experiment by Rice University scientists to study the physics of "bead-spring" polymer chains. They found the chains can be tuned for varying degrees of stiffness or flexibility. Credit: Biswal Lab/Rice University

Rice University researchers are using magnetic beads and DNA "springs" to create chains of varying flexibility that can be used as microscale models for polymer macromolecules.

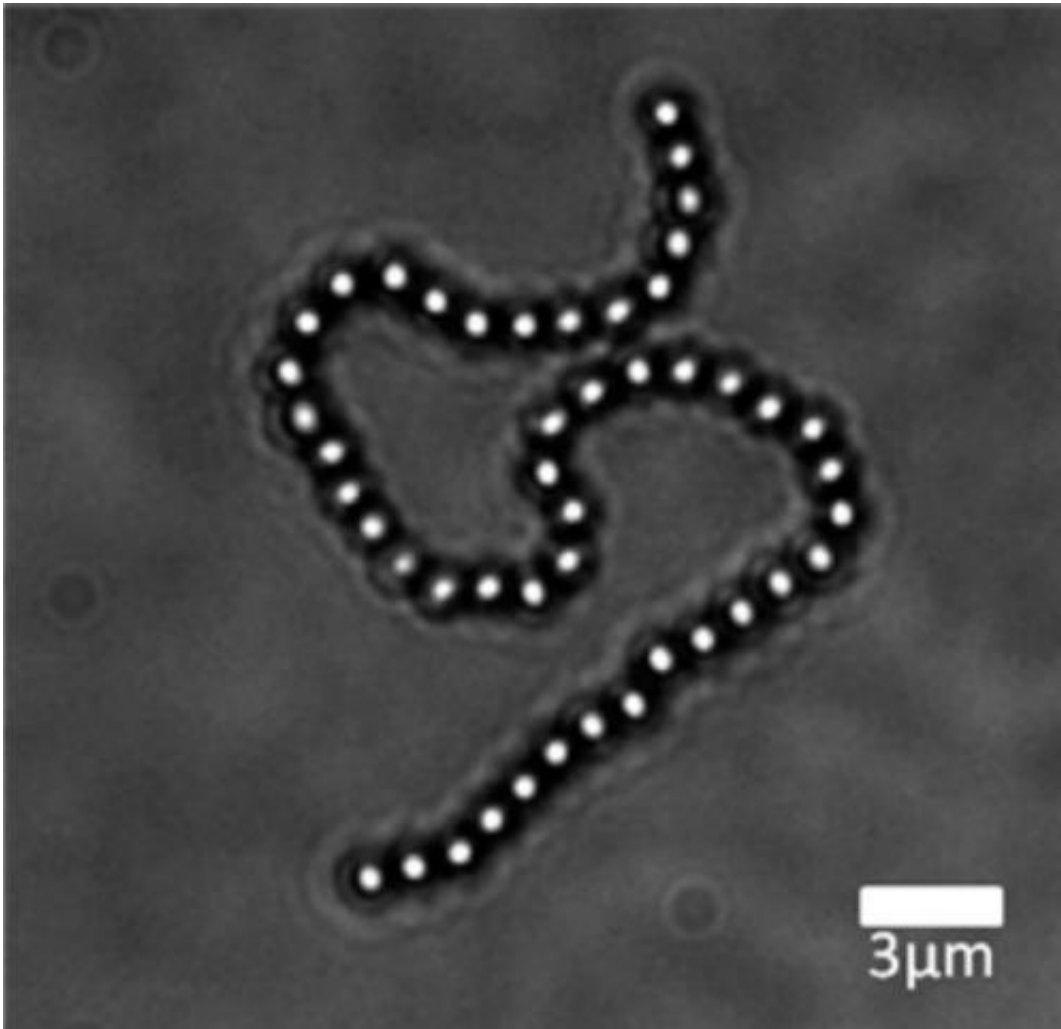
The experiment is visual proof that "bead-spring" polymers, introduced as theory in the 1950s, can be made as stiff or as flexible as required and should be of interest to materials scientists who study the basic physics of polymers

The work led by Rice chemical and biomolecular engineer Sibani Lisa Biswal and graduate student Julie Byrom was published this month in the American Chemical Society journal *Langmuir*.

The researchers found the best way to study the theory was to assemble chains of micron-sized colloidal [beads](#) with nanoscale DNA springs of various lengths.

"Polymers are classically described as beads connected with springs," Biswal said. "A lot of polymer physicists have come up with scaling laws and intuitive polymer properties based on this very simple concept. But there are very few bead-spring model systems that you can actually visualize. That's why this work came about."

Microscopic solids suspended in a liquid like the fat particles in milk or pigment particles in paint are examples of a colloidal system. Biswal said there has been great interest in creating colloidal molecules, and the Rice experiment is a step in that direction.



Chains of iron-rich polystyrene beads linked by nanoscale strands of DNA were created at Rice University to study the properties of "bead-spring" polymer chains. Credit: Biswal Lab/Rice University

To make complex colloidal [macromolecules](#), the researchers started with commercially available, iron-rich polystyrene beads coated with a protein, streptavidin. The beads are charged to repel each other but can connect together with springy DNA fragments. The chains formed when the researchers exposed the beads to a [magnetic field](#).

"We use the field to control particle positioning, let the DNA link the

beads together and turn the field off," Biswal said, explaining how the chains self-assemble. "This is a nice system for polymers, because it's large enough to visualize individual beads and positioning, but it's small enough that thermal (Brownian) forces still dictate the chain's motion."

As expected, when they made chains with short (about 500 base pairs) DNA bridges, the macromolecule remained stiff. Longer linkers (up to 8,000 base pairs) appeared to coil up between the beads, allowing for movement in the chain. Surprisingly, when the researchers reapplied the magnetic field to stretch the long links, they once again became rigid.

"Our vision of what's happening is that DNA allows some wiggle room between particles and gives the chain elasticity," Biswal said. "But if the particles are pulled far enough apart, you stress the bridge quite a bit and reduce the freedom it has to move."

Being able to engineer such a wide range of flexibilities allows for more complex materials that can be actuated with magnetic fields, Biswal said.

"This research is interesting because until now, people haven't been able to make flexible chains like this," Byrom said. "We want to be able to explain what's happening across a broad range of polymers, but if you can only make rigid chains, it sort of limits what you can talk about."

Now that they can create [polymer chains](#) with predictable behavior, the researchers plan to study how the chains react to shifting magnetic fields over time, as well as how the chains behave in fluid flows.

More information: *Langmuir*, Article ASAP. [DOI: 10.1021/la5009939](https://doi.org/10.1021/la5009939)

Provided by Rice University

Citation: Seeing is bead-lieving: Scientists create model 'bead-spring' chains with tunable properties (2014, July 28) retrieved 9 May 2024 from <https://phys.org/news/2014-07-bead-lieving-scientists-bead-spring-chains-tunable.html>

This document is subject to copyright. Apart from any fair dealing for the purpose of private study or research, no part may be reproduced without the written permission. The content is provided for information purposes only.