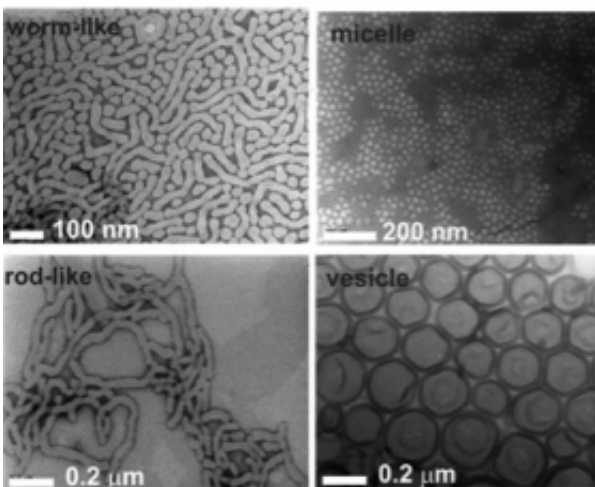


Cylindrical nanoparticles more deadly to breast cancer

December 3 2013



Microscope images of the worm-like, rod-like, micelle and vesicle shaped nanoparticles,

(Phys.org) —Cylindrical shaped nanoparticles are seven times more deadly than traditional spherical ones when delivering drugs to breast cancer cells, an international team of researchers has discovered.

Even better – the worm-shaped drug delivery vehicles aren't more toxic to [healthy cells](#) according to the study, which was recently published in Polymer Chemistry.

In this study, different polymeric nanoparticle shapes (including

spherical micelle, cylindrical micelle and vesicles) were investigated, and the preliminary results suggest shape plays an important role in the cell uptake and toxicity response. The project was co-led by Associate Professor Cyrille Boyer from the UNSW School of Chemical Engineering and the Australian Centre for NanoMedicine and Professor Thomas Davis from Monash University, and involved Dr Bunyamin Karagoz from Istanbul Technical University.

Developing [nanoparticles](#) to target drugs directly to specific regions of the body is a growing field of medicine, and these new results suggest changing the shape of nanoparticles could reduce treatment costs and side effects.

"What we've discovered is that a different shaped nanoparticle can have a very different effect on [cancer cells](#), even with the same amount of drug," says Boyer. "However there is still a lot of work to do and we need to test the nanoparticles in vitro with a range of [cancer cells](#)."

Previously, research has overwhelmingly focused on spherical drug delivery systems as they're easier to make, but this new study also presents a simple and cheap way of creating three different nanoparticle shapes – spherical, vesicular and tubular or 'worm-like'.

The researchers are now looking into whether cylindrical shape nanoparticles also deliver drugs more efficiently to other types of cancers.

More information: "Polymerization-Induced Self-Assembly (PISA) – control over the morphology of nanoparticles for drug delivery applications." Bunyamin Karagoz, Lars Esser, Hien T. Duong, Johan S. Basuki, Cyrille Boyer, Thomas P. Davis. *Polym. Chem.*, 2014. [DOI: 10.1039/C3PY01306E](#) , Received 19 Sep 2013, Accepted 01 Oct 2013.

Provided by University of New South Wales

Citation: Cylindrical nanoparticles more deadly to breast cancer (2013, December 3) retrieved 14 May 2024 from <https://phys.org/news/2013-12-cylindrical-nanoparticles-deadly-breast-cancer.html>

This document is subject to copyright. Apart from any fair dealing for the purpose of private study or research, no part may be reproduced without the written permission. The content is provided for information purposes only.